

For Lease

Office Building

| Negotiable



1995 Midfield Road

1995 Midfield Drive
Wichita, Kansas 67209

Property Highlights

- Building is divisible; 7,500 - 15,748 Square Feet
- 28 Private Executive Offices
- 3 Conference Rooms
- Large Common Areas
- Vestibule Entrances with Formal Reception Areas
- Various Building Improvements, Including New HVAC
- Basement Storage & Storm Shelter
- 100 Stall Concrete Parking Lot
- Property Tax Exempt

Property Description

7,500 SF - 15,748 SF divisible single story free standing office building located on Dwight D. Eisenhower National Airport campus. This office space offers exceptional access to US-400, the main east and west arterial in Wichita. Hotels and business services as well as national restaurants are conveniently located within close proximity. Award winning Eisenhower National Airport serves 7 airlines with 13 non-stop destinations as well as developed a new \$200 Million terminal & 1,600 car parking garage in 2015. Related industry area users include; FedEx, Bombardier Learjet, Textron Aviation, FlightSafety International, Garmin, Honeywell, Pratt & Whitney, and Rockwell Collins.

OFFERING SUMMARY

Available SF	
Lease Rate	Negotiable
Monthly Rate	\$5,000 - \$10,500
Building Size	15,748 SF

For more information

Scott Salome, SIOR

O: 316 847 4903
ssalome@naimartens.com

Patrick Ahern, SIOR, CCIM

O: 316 847 4914
pahern@naimartens.com



1330 E. Douglas Ave.,
Wichita, KS 67214
316 262 0000 tel
naimartens.com



For Lease

Office Building

| Negotiable



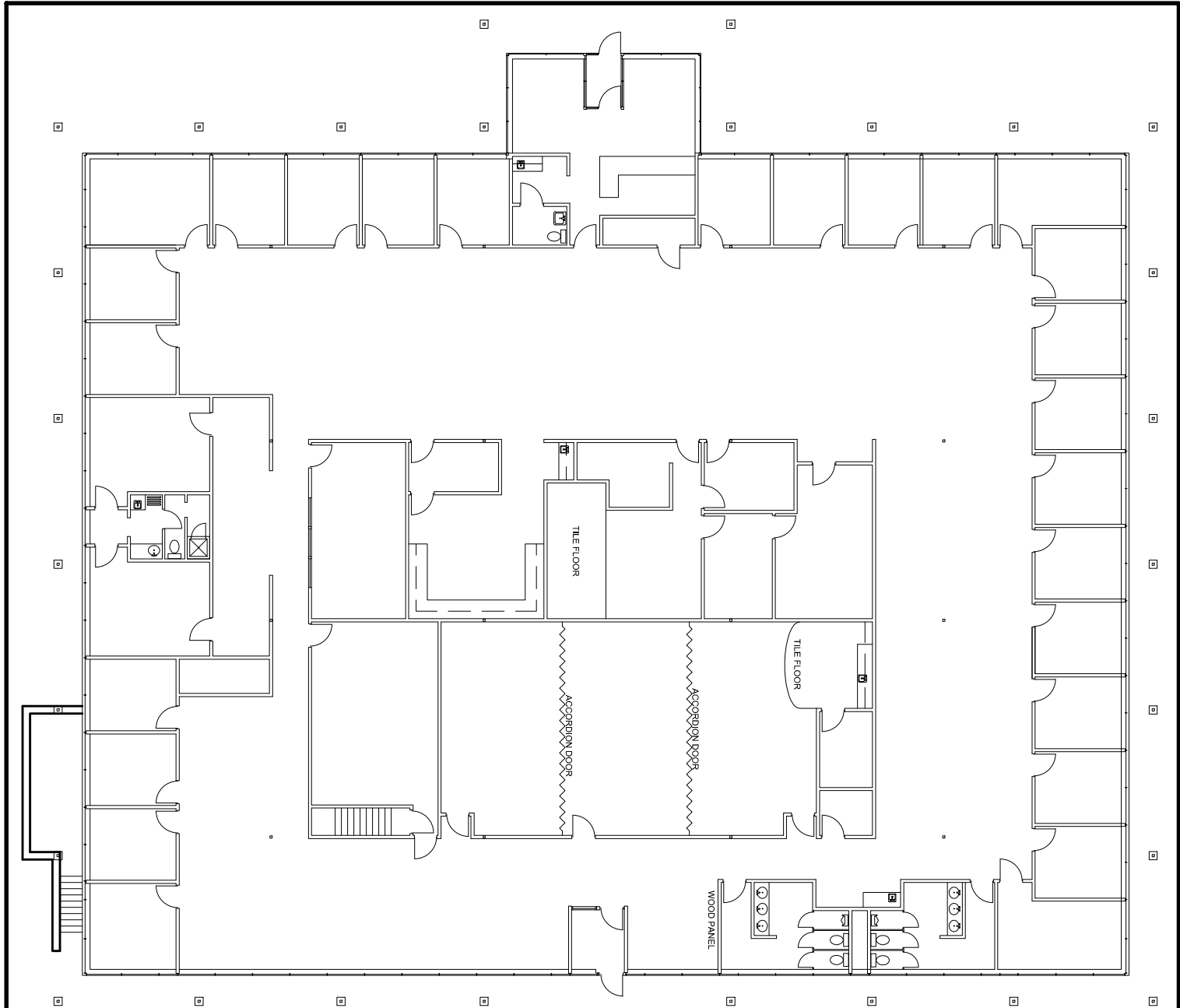
For Lease

Office Building

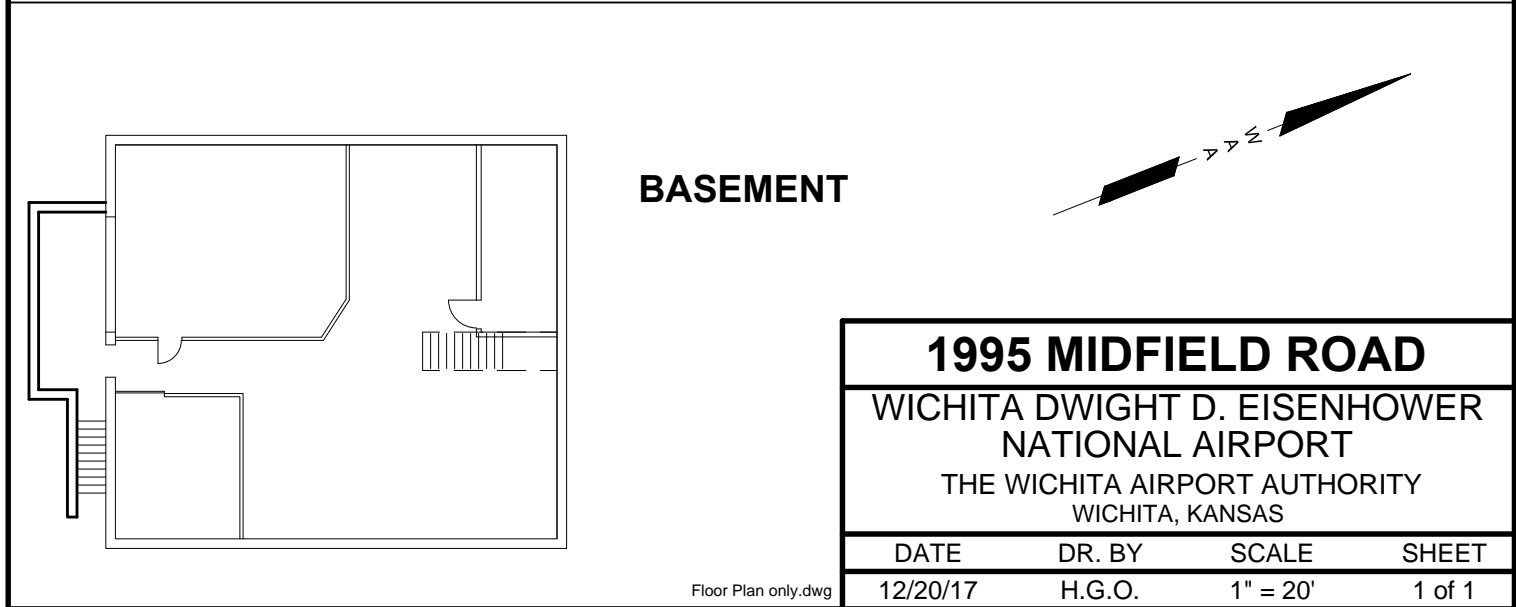
| Negotiable



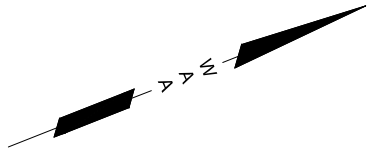
D:\Drawings\2'16-Buildings\MidField Road\1995_AOPA\Floor Plan only.dwg, FloorPlanBoth, 12/20/2017 2:21:28 PM



1st FLOOR



BASEMENT



1995 MIDFIELD ROAD			
WICHITA DWIGHT D. EISENHOWER NATIONAL AIRPORT			
THE WICHITA AIRPORT AUTHORITY WICHITA, KANSAS			
DATE	DR. BY	SCALE	SHEET
12/20/17	H.G.O.	1" = 20'	1 of 1

For Lease

Office Building

| Negotiable

