

FOR SALE

4501 N. Maize Road Maize, KS 67101

NaimMartens



North Maize Road Land

- 7.57 acres along north Maize Road
- 328 feet street frontage
- Currently zoned rural residential
- Ideal for commercial development
- Utilities in close proximity to site
- Projected population growth of 400% in 1 mile within 5 years

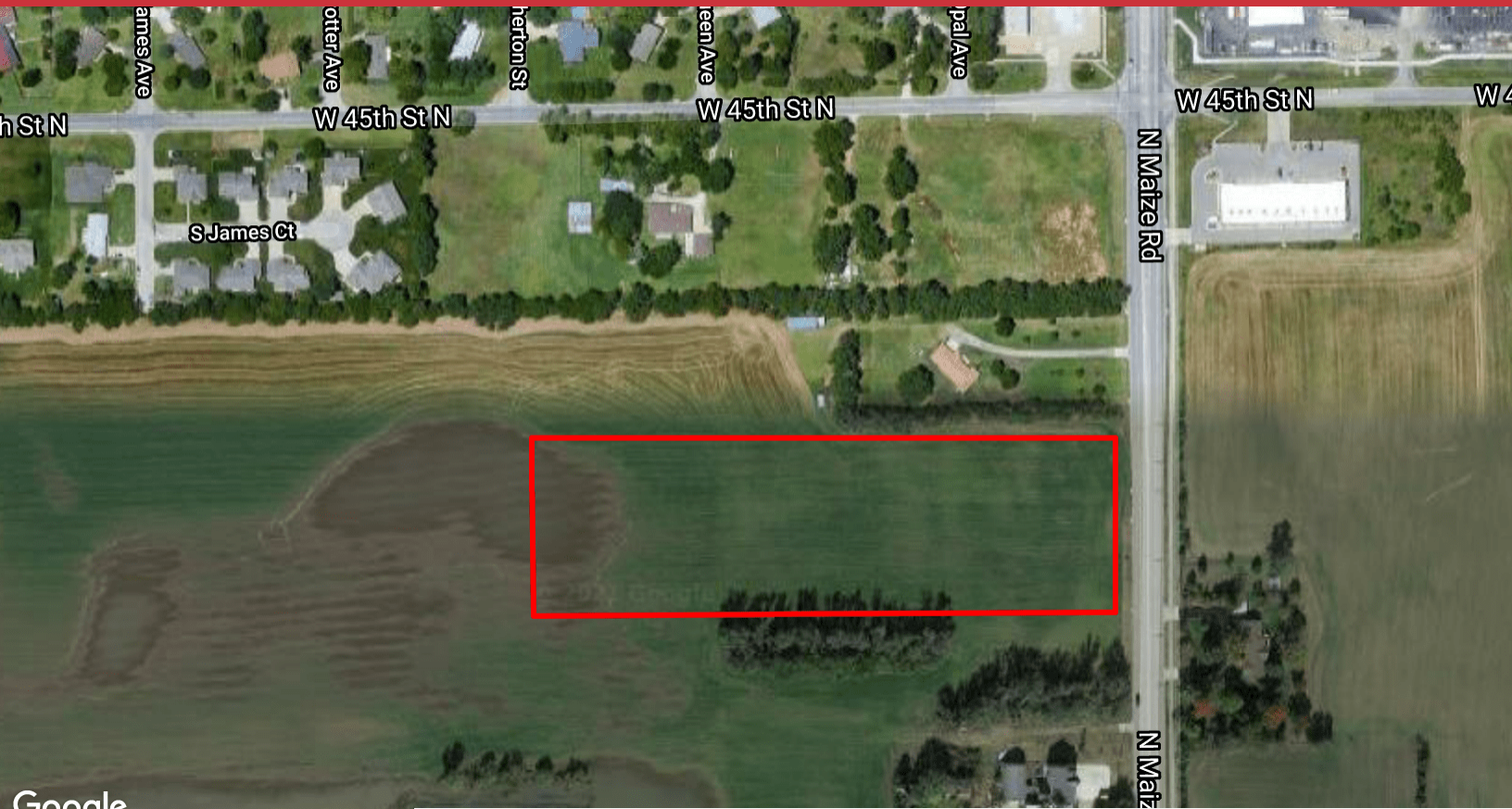
OFFERING SUMMARY

SALE PRICE	\$1,000,000
LOT SIZE	7.57 Acres
LAND TYPE	Commercial

2023 Est. Demographics	1 Mile	3 Miles	5 Miles
Total Population:	4,378	25,490	61,790
Average HH Income:	\$99,106	\$125,228	\$116,131



7.57 Acres | Located on the north Maize corridor



Google

Map data ©2021 Imagery ©2021, Maxar Technologies, U.S. Geological Survey, USDA Farm Service Agency

✉ **Grant Glasgow, SIOR**
+1 316 847 4908
gglasgow@naimartens.com

No Warranty Or Representation, Express Or Implied, Is Made As To The Accuracy Of The Information Contained Herein, And The Same Is Submitted Subject To Errors, Omissions, Change Of Price, Rental Or Other Conditions, Prior Sale, Lease Or Financing, Or Withdrawal Without Notice, And Of Any Special Listing Conditions Imposed By Our Principals. No Warranties Or Representations Are Made As To The Condition Of The Property Or Any Hazards Contained Therein Are Any To Be Implied.

Naimartens