



4261 S. West St.

Wichita, Kansas 67217

Property Highlights

- 42,350 SF Office/Warehouse/Manufacturing building
- 1,680 SF Office
- Land Size: 15.54 Acres
- Located one mile south of I-235
- 1 Dock-high door (8'x10')
- 4 Drive-in doors
- Ceiling clear height: 16' to 20'
- Electric Power - 2,000 Amp, 3-Phase
- 100% Wet sprinkler system
- 2020 Taxes: \$46,591.96
- Zoning: Limited Industrial (LI)

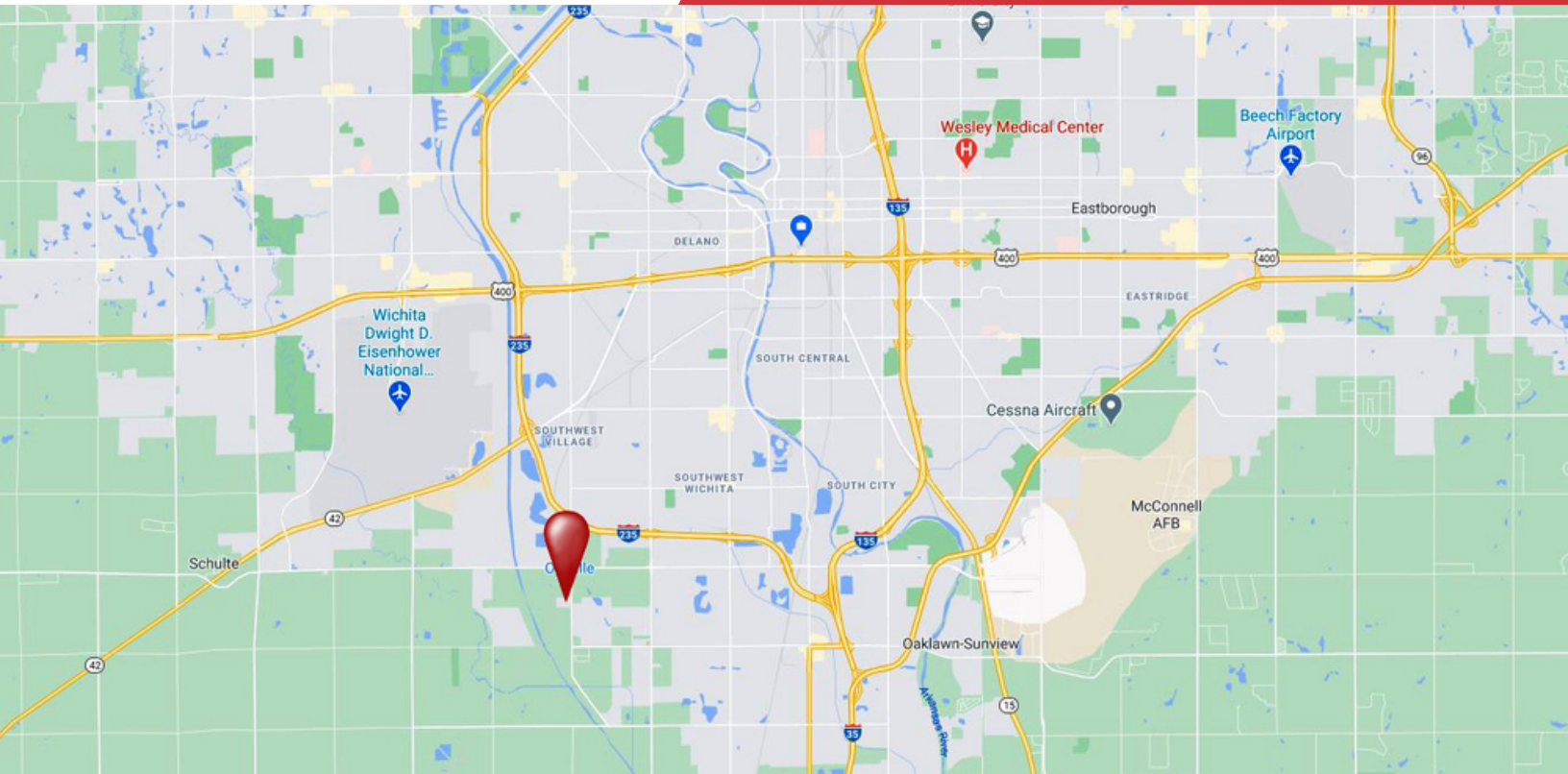
Call Price: \$1,050,000



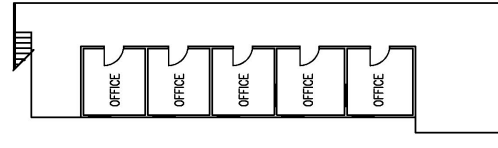
For More Information

Scott Salome, SIOR

O: 316 847 4903
ssalome@naimartens.com



SECOND FLOOR



FIRST FLOOR

