



For Sale

# Housing/Social Services

Southwest Wichita, KS

Price Reduced

## 1319 W May

Wichita, Kansas 67213

### Property Highlights

- 4.53 acre site located between Harry and Pawnee just west of Seneca
- 42,682 SF of office/dormitory
- Redevelopment Opportunity
- Sale Price: \$450,000

### Property Description

Currently being used as a residential treatment facility including day care and administrative offices. The property can be converted to a health care facility, group housing or general office use. The lay out features offices, meeting rooms, kitchen, dining, large bedrooms with bathroom. Close proximity to Westway shopping center and many retailers.

#### OFFERING SUMMARY

<b>Sale Price</b>	\$450,000
<b>Lot Size</b>	4.53 Acres
<b>Building Size</b>	42,683 SF

#### DEMOGRAPHICS

Stats	Population	Avg. HH Income
<b>1 Mile</b>	13,377	\$37,660
<b>2 Miles</b>	49,007	\$38,199
<b>3 Miles</b>	89,964	\$40,048

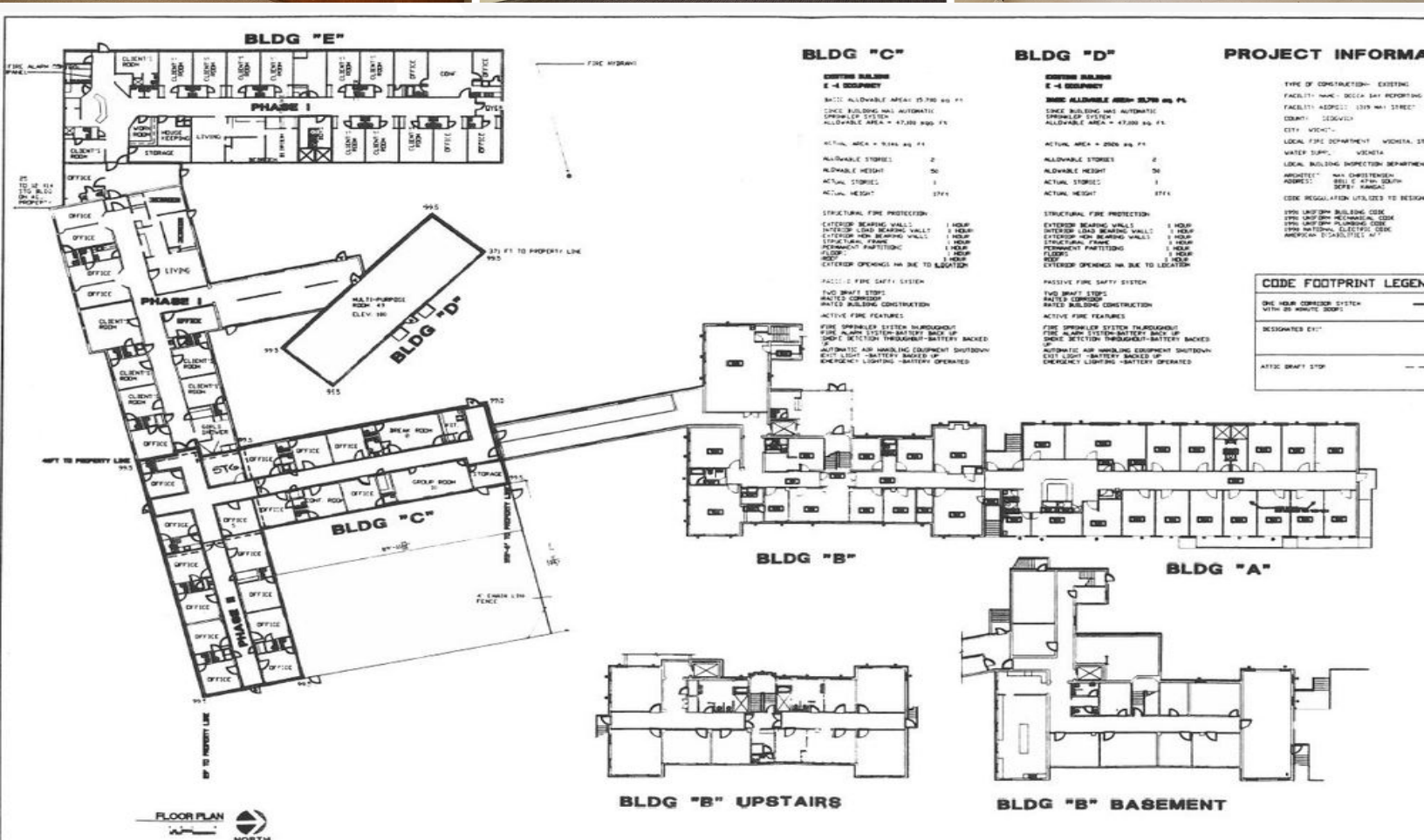
For more information  
**Patrick Ahern, SIOR, CCIM**

O: 316 847 4914  
pahern@naimartens.com

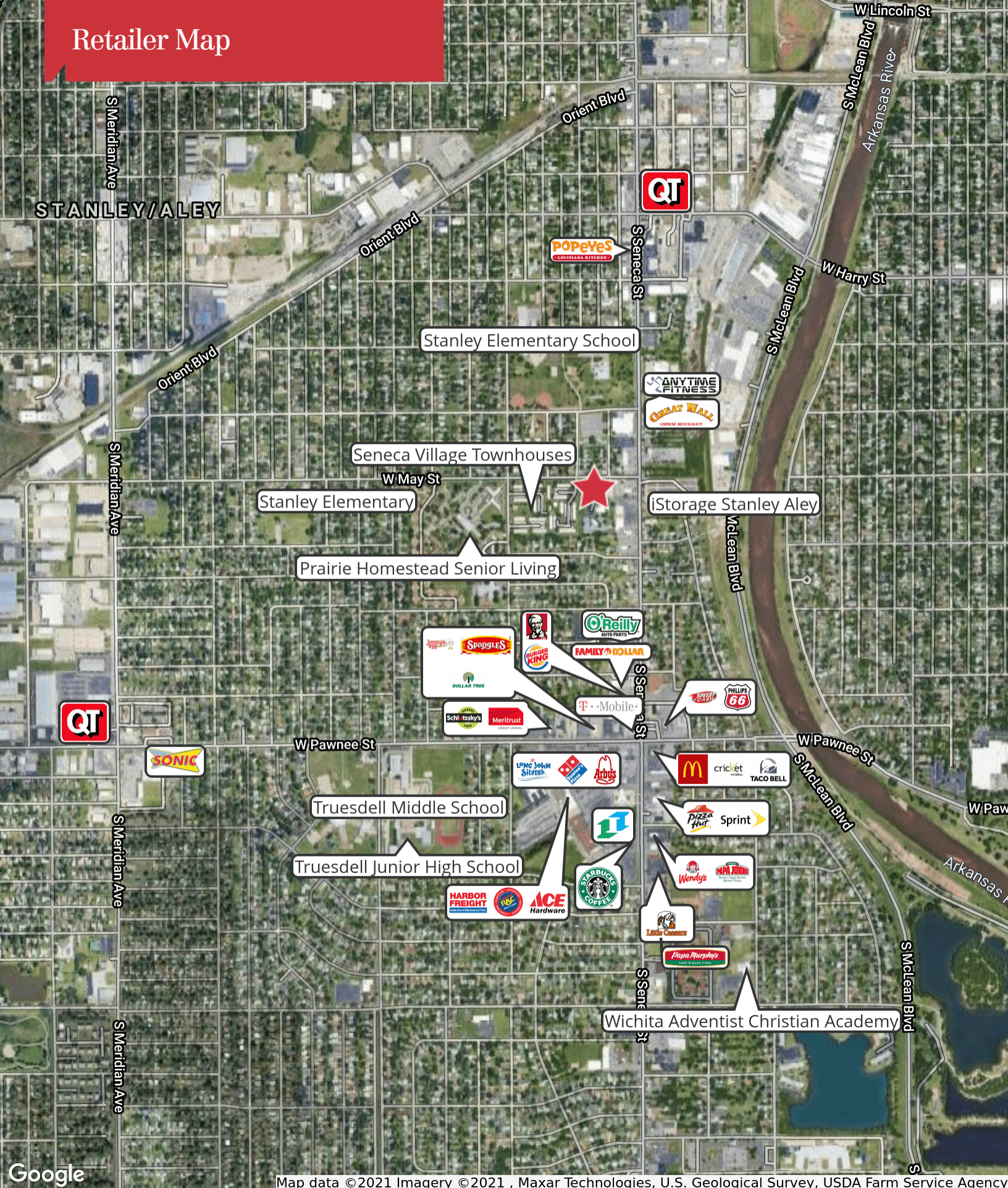
**Ryan Hubbard**

O: 316 613 2448  
rhubbard@naimartens.com

## Additional Photos



# Retailer Map

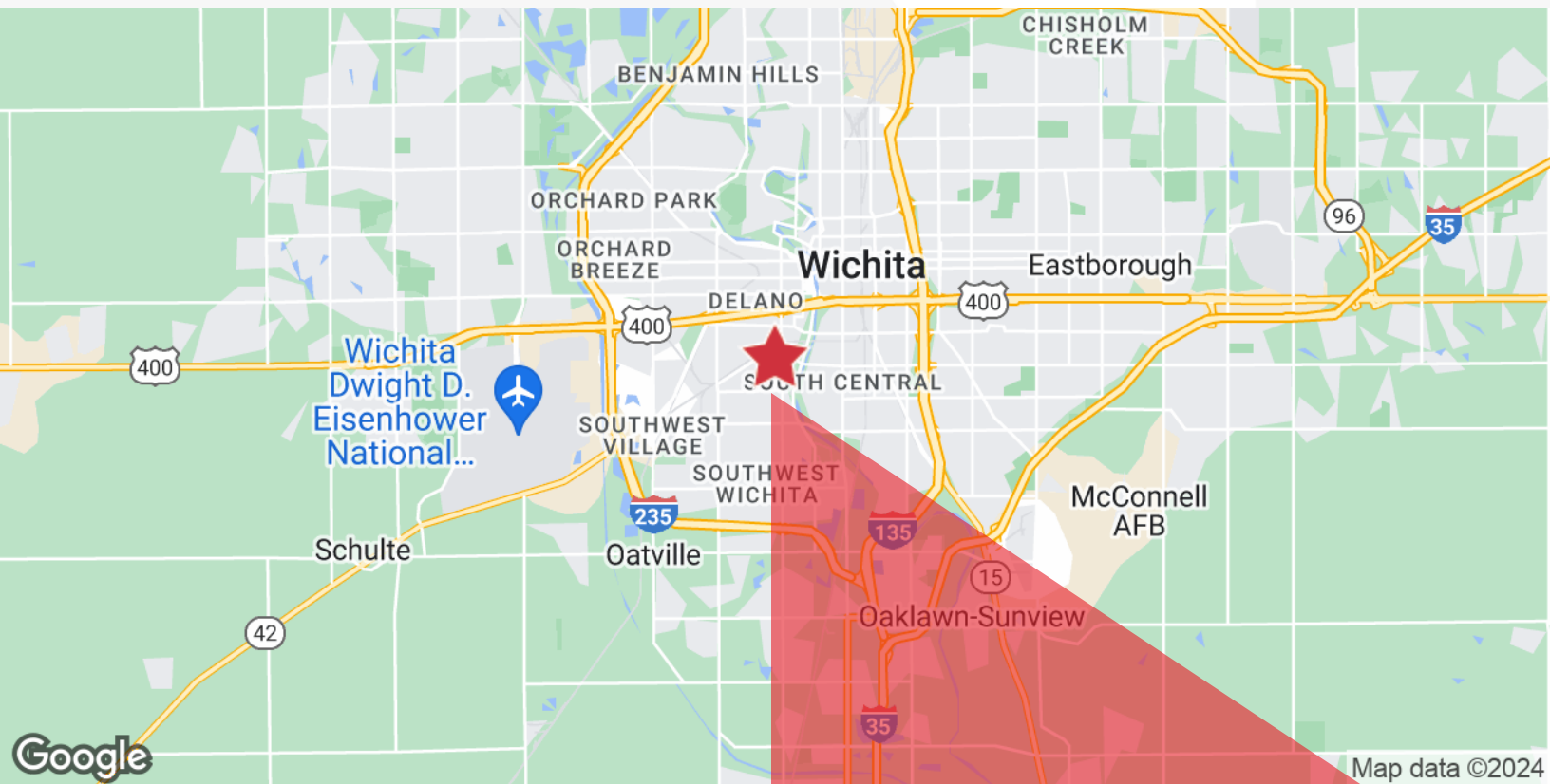


Map data © 2021 Imagery © 2021 , Maxar Technologies, U.S. Geological Survey, USDA Farm Service Agency

# 1319 W May

1319 W May

Wichita, Kansas 67213



For more information

**Patrick Ahern, SIOR, CCIM**

O: 316 847 4914 | [pahern@naimartens.com](mailto:pahern@naimartens.com)

**Ryan Hubbard**

O: 316 613 2448 | [rhubbard@naimartens.com](mailto:rhubbard@naimartens.com)



1330 E. Douglas Ave.,  
Wichita, KS 67214  
316 262 0000 tel  
[naimartens.com](http://naimartens.com)

