

For Lease

Office Building

3,200 SF | \$5.00 SF/yr (NNN)



1922 Midfield Road

Wichita, Kansas 67209

Property Highlights

- Reception Area
- Large Common Areas
- 2 Private Offices
- Parking Lot Containing 12 Stalls
- Property Tax Exempt

Property Description

3,200 SF single story free standing office building located on Dwight D. Eisenhower National Airport campus. This office space offers exceptional access to US-400, the main east and west arterial in Wichita. Hotels and business services as well as national restaurants are conveniently located within close proximity. Award winning Eisenhower National Airport serves 7 airlines with 13 non-stop destinations as well as developed a new \$200 Million terminal & 1,600 car parking garage in 2015. Related industry area users include; FedEx, Bombardier Learjet, Textron Aviation, FlightSafety International, Garmin, Honeywell, Pratt & Whitney, and Rockwell Collins.

OFFERING SUMMARY

Available SF	
Lease Rate	\$5.00 SF/yr (NNN)
Monthly Rate	\$1,333.33
Building Size	3,200 SF

For more information

Scott Salome, SIOR

O: 316 847 4903
ssalome@naimartens.com

Patrick Ahern, SIOR, CCIM

O: 316 847 4914
pahern@naimartens.com

Shane Pullman

O: 316 613 2449
spullman@naimartens.com



1330 E. Douglas Ave.,
Wichita, KS 67214
316 262 0000 tel
naimartens.com

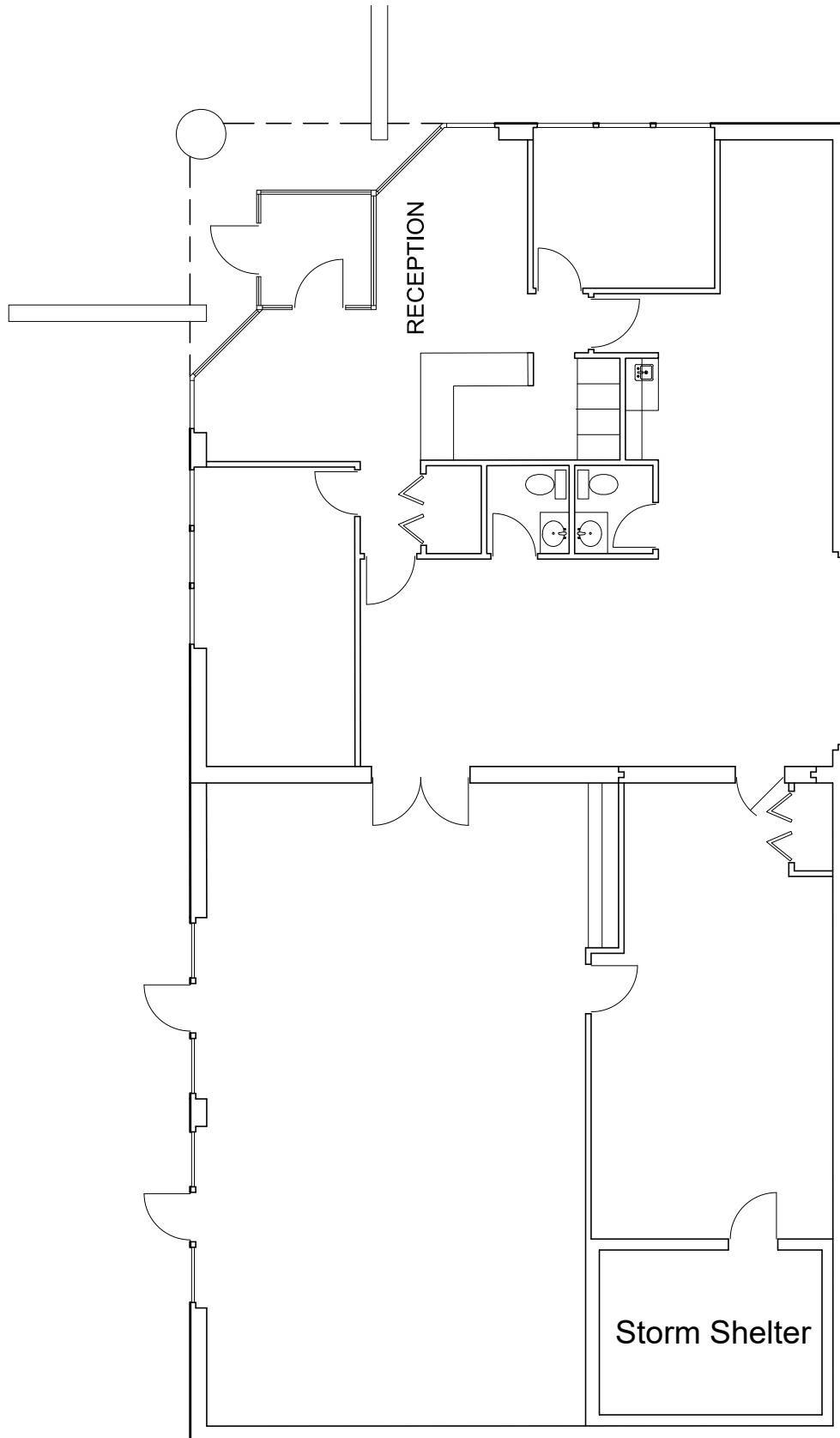


For Lease

Office Building

3,200 SF | \$5.00 SF/yr





INSURANCE OR REPLACEMENT AREA

FOOTPRINT/FOUNDATION = 3,200 SQ.FT.

ENCLOSED AREA/SPACE = 3,109 SQ.FT.

1922 MIDFIELD ROAD

WICHITA MID-CONTINENT AIRPORT

THE WICHITA AIRPORT AUTHORITY
WICHITA, KANSAS

DATE	DR. BY	SCALE	SHEET
12/9/09	H.G.O.	1" = 10'	1 of 1

For Lease

Office Building

3,200 SF | \$5.00 SF/yr

