

For Lease

Dock High Air Cargo Building

3,113 - 5,187 SF | \$9.59 SF/yr



1935 S. Air Cargo Road

Wichita, Kansas 67209

Property Highlights

- Air Cargo Related Tenants
- 14' x 16' door with full dock height ramp
- Flexible Lease Length
- Property Tax Exempt
- Ample Parking and Truck Turn Around Space
- Reception, Office & 447 SF Mezzanine Storage Area
- Private Restroom Accommodations

Property Description

3,113 - 5,187 SF Air Cargo Warehouse located on Dwight D. Eisenhower National Airport campus. This air cargo space offers exceptional access to US-400, the main east and west arterial in Wichita. Hotels and business services as well as national restaurants are conveniently located within close proximity. Award winning Eisenhower National Airport serves 7 airlines with 13 non-stop destinations as well as developed a new \$200 Million terminal & 1,600 car parking garage in 2015. Related industry area users include; FedEx, Bombardier Learjet, Textron Aviation, FlightSafety International, Garmin, Honeywell, Pratt & Whitney, and Rockwell Collins.

OFFERING SUMMARY

Available SF	3,113 - 5,173 SF
Lease Rate	\$9.59 SF/yr (NNN)
Building Size	43,800 SF

AVAILABLE SPACES

Space	Lease Rate	Size (SF)
-------	------------	-----------

For more information

Scott Salome, SIOR

O: 316 847 4903
ssalome@naimartens.com

Patrick Ahern, SIOR, CCIM

O: 316 847 4914
pahern@naimartens.com



1330 E. Douglas Ave.,
Wichita, KS 67214
316 262 0000 tel
naimartens.com



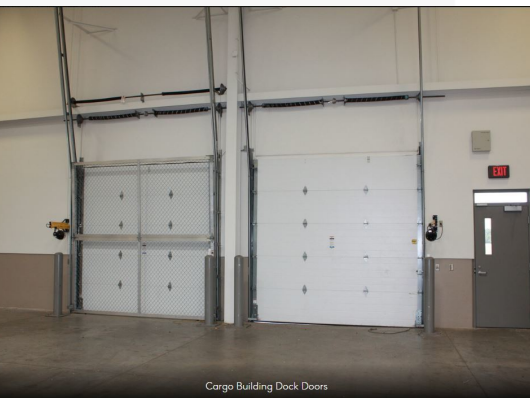
For Lease

Industrial Property

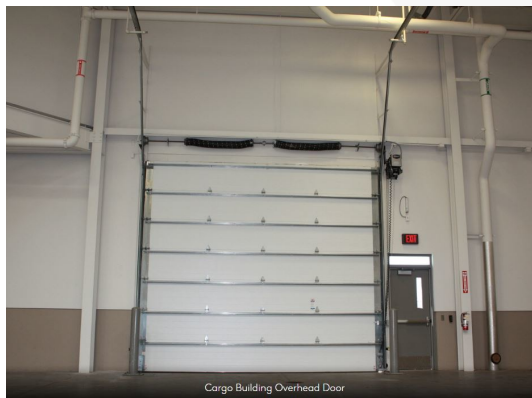
3,113 SF - 5,573 SF | \$9.59 SF/yr



Cargo Building Unit 700



Cargo Building Dock Doors



Cargo Building Overhead Door



D:\Drawings\216-Buildings\Air Cargo Road\1935-North-Cargo\General Unit Layout.dwg, B, 12/6/2018 4:32:16 PM

UNIT 600

LEGEND

----- SIDA LINE

UNIT 600

WICHITA DWIGHT D. EISENHOWER
NATIONAL AIRPORT
THE WICHITA AIRPORT AUTHORITY
WICHITA, KANSAS

DATE	DR. BY	SCALE	SHEET
12/6/18	H.G.O.	1" = 10'	2 of 2

UNIT 700

LEGEND

----- SIDA LINE

UNIT 700

WICHITA DWIGHT D. EISENHOWER
NATIONAL AIRPORT
THE WICHITA AIRPORT AUTHORITY
WICHITA, KANSAS

DATE	DR. BY	SCALE	SHEET
12/7/18	H.G.O.	1" = 10'	2 of 2

For Lease

Industrial Property

| Negotiable

