

For Lease

Office Building

7,150 SF | \$8.00 SF/yr (NNN)



1935 S. Midfield Road

Wichita, Kansas 67209

Property Highlights

- 7 Private Executive Offices
- 2 Conference Rooms
- Spacious Break Room
- Large Common Areas
- 29 Spot Concrete Parking Lot
- Property Tax Exempt

Location Description

7,150 SF single story free standing office building located on Dwight D. Eisenhower National Airport campus. This office space offers exceptional access to US-400, the main east and west arterial in Wichita. Hotels and business services as well as national restaurants are conveniently located within close proximity. Award winning Eisenhower National Airport serves 7 airlines with 13 non-stop destinations as well as developed a new \$200 Million terminal & 1,600 car parking garage in 2015. Related industry area users include; FedEx, Bombardier Learjet, Textron Aviation, FlightSafety International, Garmin, Honeywell, Pratt & Whitney, and Rockwell Collins.

OFFERING SUMMARY

Available SF	7,150 SF
Lease Rate	\$8.00 SF/yr (NNN)
Lot Size	1.61 Acres
Building Size	7,150 SF

For more information

Scott Salome, SIOR

O: 316 847 4903
ssalome@naimartens.com

Patrick Ahern, SIOR, CCIM

O: 316 847 4914
pahern@naimartens.com



1330 E. Douglas Ave.,
Wichita, KS 67214
316 262 0000 tel
naimartens.com

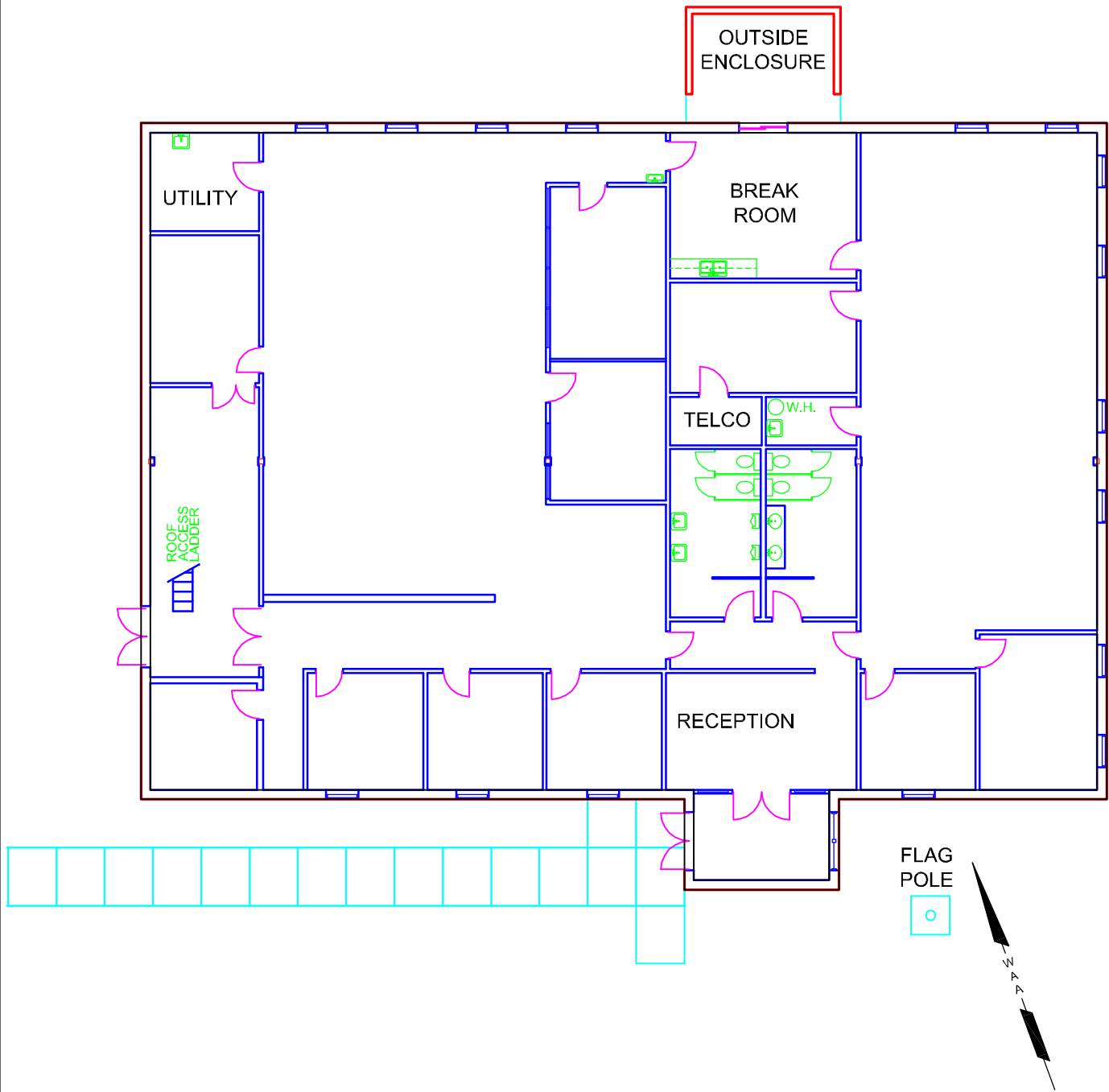


For Lease

Office Building

7,150 SF | \$8.00 SF/yr (NNN)





1935 MIDFIELD ROAD			
WICHITA MID-CONTINENT AIRPORT			
THE WICHITA AIRPORT AUTHORITY WICHITA, KANSAS			
DATE	DR. BY	SCALE	SHEET
7/30/09	H.G.O.	1" = 16'	1 of 1

For Lease

Office Building

7,150 SF | \$8.00 SF/yr (NNN)

