

For Sale

Industrial Land

10 Acres | Kansas City Area



Logistics Park Kansas City Development Land

191st & Waverly
Edgerton, Kansas 66030

Property Highlights

- Utilities to site
- Financial incentives
- Immediate access to BNSF Railway's intermodal facility
- Immediate transportation savings
- Convenient interstate highway access

Property Description

LPKC is a 1,700-acre master-planned development served by BNSF Railway's newest intermodal facility.

VIEW PROPERTY VIDEO

OFFERING SUMMARY

Sale Price	\$1,200,000
Lot Size	10.0 Acres

DEMOGRAPHICS

Stats	Population	Avg. HH Income
1 Mile	550	\$88,348
5 Miles	26,923	\$73,724
10 Miles	64,437	\$82,278

For more information

Nathan Farha, CCIM

O: 316 263 9669

nfarha@naimartens.com



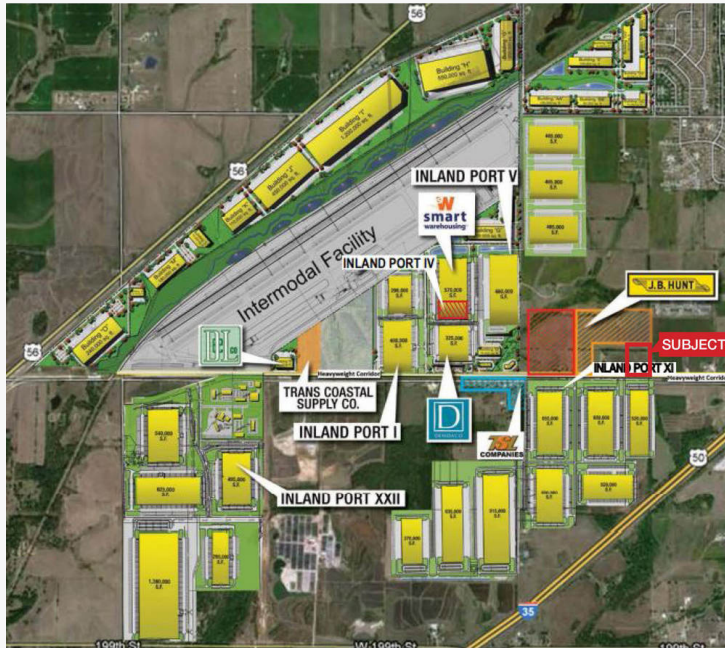
1330 E. Douglas Ave.,
Wichita, KS 67214
316 262 0000 tel
naimartens.com



For Sale

LPKC Land

10 Acres



LOGISTICS PARK KANSAS CITY: A SMART MOVE

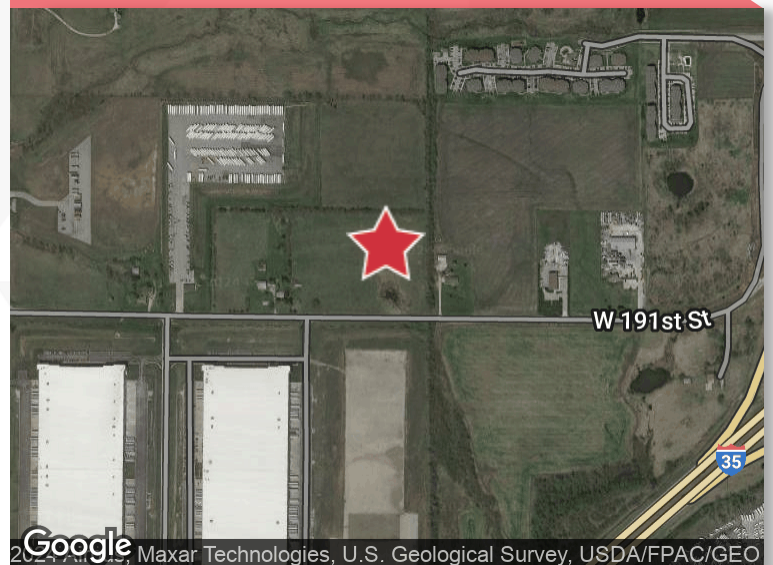
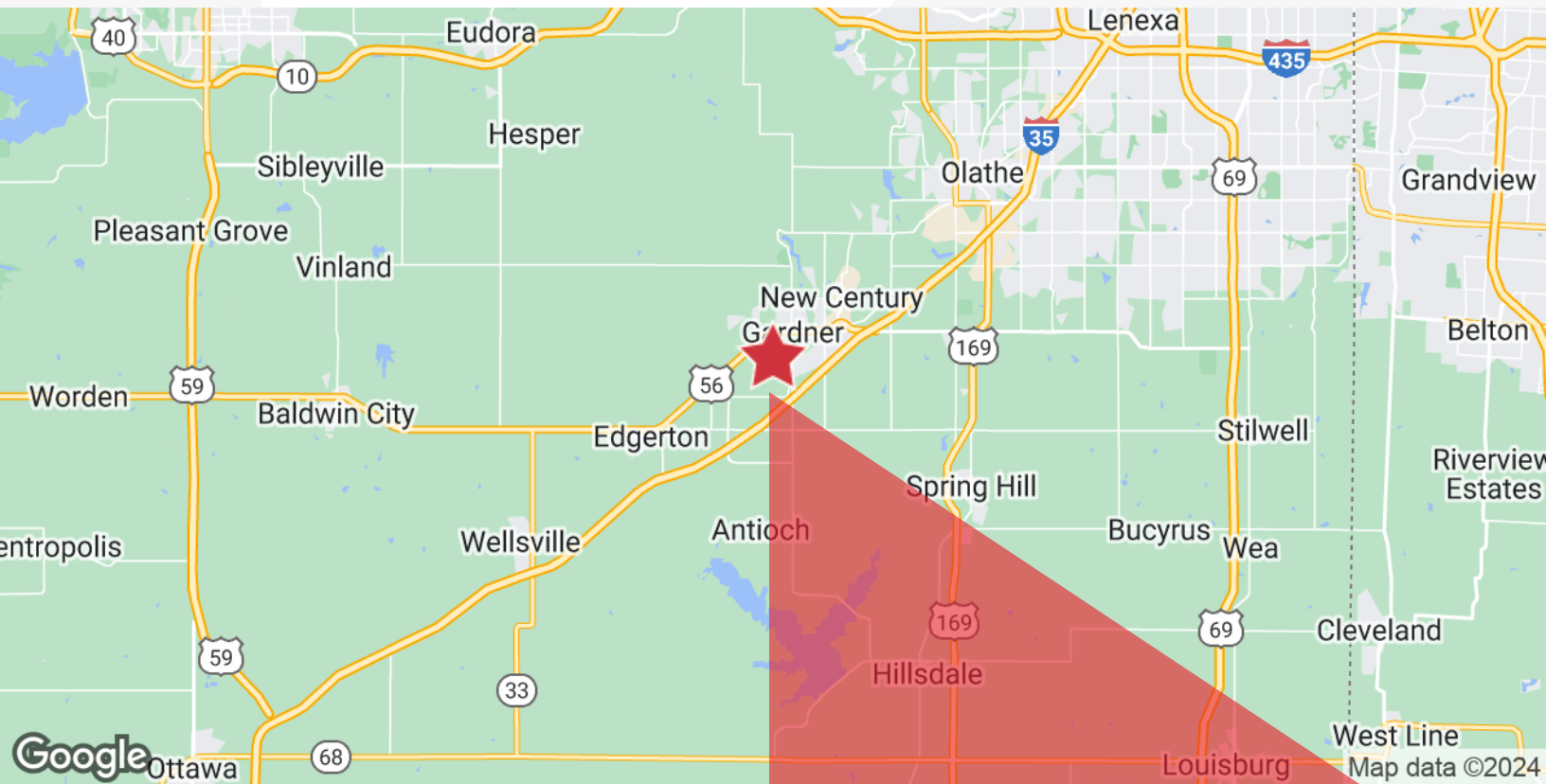
Strategically and centrally located in America's heartland, LPKC is a master-planned distribution and warehouse development. Served by the world's leading intermodal rail provider, BNSF Railway, LPKC is the ideal business park, perfectly positioned for the efficient shipment of goods for import and export — serving all points throughout the United States.

LPKC is a 1,700-acre logistics park capable of handling 17 million square feet (SF) of buildings, nearly three million of which will be direct-rail served. Because of its geographic proximity to the growing Midwest and Central United States region, LPKC is an excellent location for warehouse and distribution centers.

Served by BNSF Railway's newest state-of-the-art Intermodal Facility, LPKC is located along BNSF's Transcontinental Corridor. By co-locating at LPKC, companies gain significant transportation efficiencies. A business park developed using the extensive experience of BNSF and NorthPoint Development, LPKC is a competitive option to optimize the global supply chain.

Logistics Park Kansas City Development Land

191st & Waverly
Edgerton, Kansas 66030



For more information

Nathan Farha, CCIM

O: 316 263 9669 | nfarha@naimartens.com



1330 E. Douglas Ave.,
Wichita, KS 67214
316 262 0000 tel
naimartens.com

