

For Lease

Downtown Office Suite

860 SF | \$875.00 per month



Orpheum Building

200 N. Broadway, Suite 320
Wichita, Kansas 67202

Property Highlights

- Dedicated door side parking spaces
- Located at the corner of Broadway and 1st Street.
- Close proximity to: Ambassador Hotel, YMCA, Sedgwick County Courthouse, Wichita Bar Association
- Listed on the National Register of Historic Places
- Lease Rate: \$875 per month

Property Description

Office space available for rent on the third floor of the historic Orpheum office building located in the heart of downtown. Suite can be delivered furnished, has three rooms, new carpet and paint. Dedicated parking is located North of the building. Incredible light and view of Broadway. Rent rate includes utilities, trash, and cleaning.



For more information

Ryan Hubbard

O: 316 613 2448
rhubbard@naimartens.com

Patrick Ahern, SIOR, CCIM

O: 316 847 4914
pahern@naimartens.com



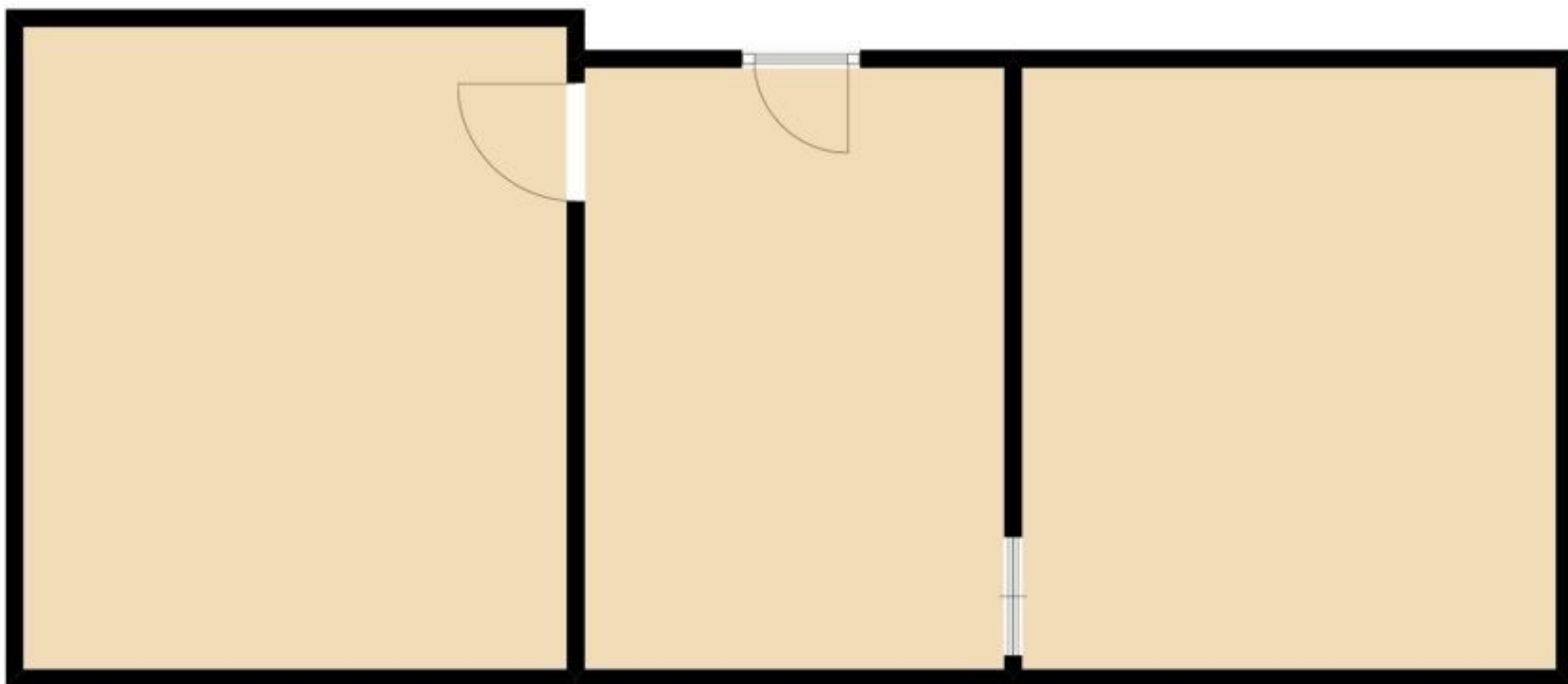
1330 E. Douglas Ave.,
Wichita, KS 67214
316 262 0000 tel
naimartens.com



Additional Photos

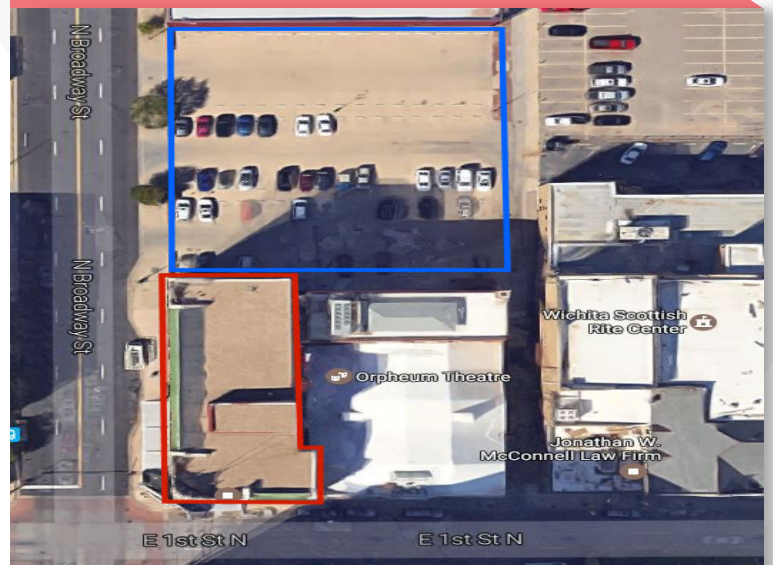
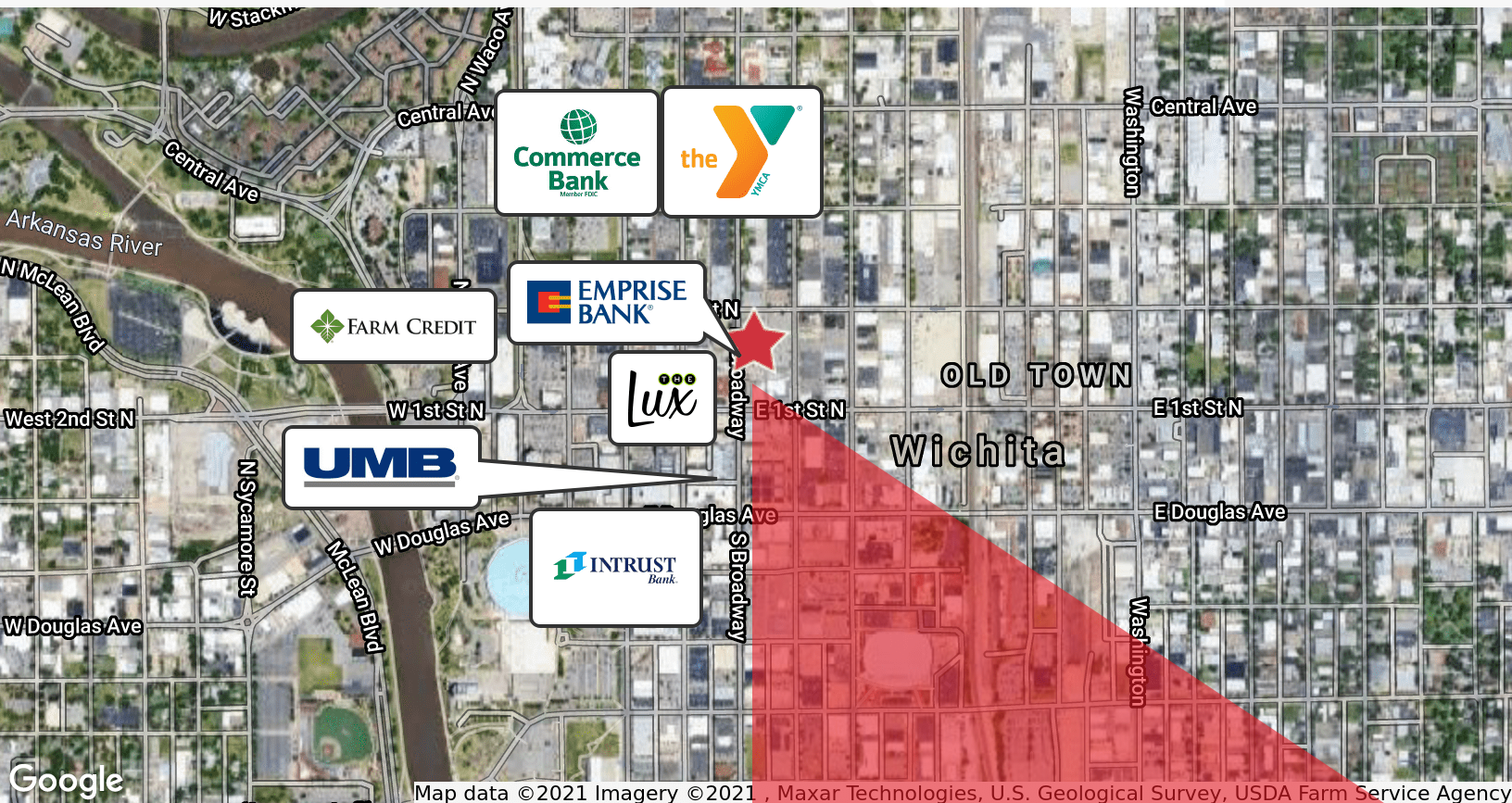


Site Plan



Orpheum Building - 200 N. Broadway

200 N. Broadway, Suite 320
Wichita, Kansas 67202



For more information

Ryan Hubbard

O: 316 613 2448 | rhubbard@naimartens.com

Patrick Ahern, SIOR, CCIM

O: 316 847 4914 | pahern@naimartens.com