

For Lease

Pad Sites

2.14 Acres | \$2.00/SF



K-96 & 13th St. Lots

E. 13th Street N. and K-96
Wichita, Kansas 67206

Property Highlights

- Two pad sites available
- Lot 1: 46,259 SF
- Lot 2: 46,742 SF
- Zoned Limited Commercial
- No current special taxes
- Ideal for restaurant, retail, or office uses

Property Description

Rare Northeast pad site availability located on the corner of 13th and K-96 across from the Plazzio development, which includes retailers such as the East Warren Theatre, The Alley Indoor Entertainment, Cheddar's, Freddy's, Applebees, Sumo and more.

VIEW PROPERTY VIDEO

OFFERING SUMMARY

Lease Rate	\$2.00/SF NNN
Lot 1	46,259 SF
Lot 2	46,742 SF

DEMOGRAPHICS

Stats	Population	Avg. HH Income
1 mile	3,047	\$129,577
3 miles	34,291	\$121,615
5 miles	125,187	\$85,761

For more information

Grant Glasgow, SIOR

O: 316 847 4908

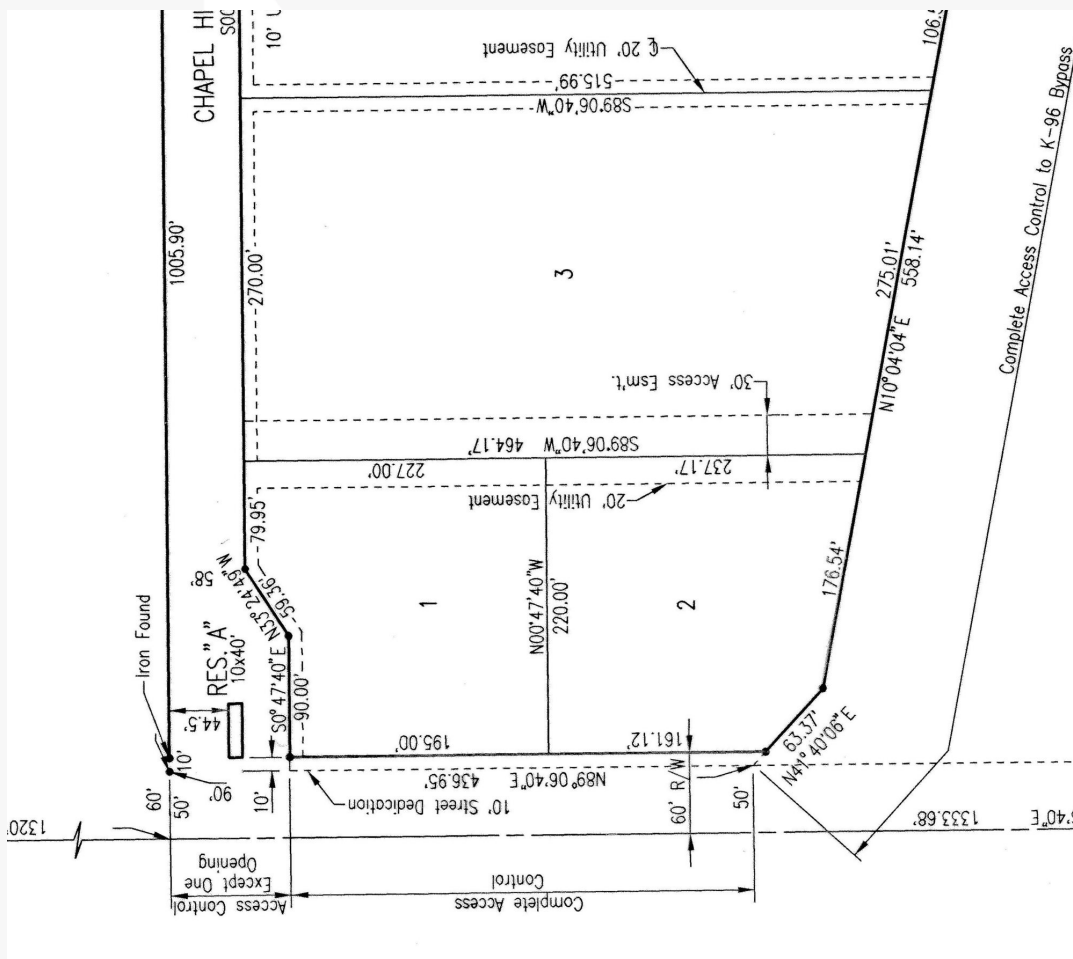
gglasgow@naimartens.com



1330 E. Douglas Ave.,
Wichita, KS 67214
316 262 0000 tel
naimartens.com



Additional Photos



Retailer Map

