



## New Construction Warehouse

21st & I-135 Wichita, Kansas 67214

### Property Highlights

- New industrial warehouse available for lease at 21st & I-135
- Building Size: 180,000 SF
- Minimum Divisible: 36,000 SF
- Zoning: General Industrial
- Concrete Tilt-Up Construction
- Column Spacing: 50' x 50'
- Ceiling Height: 32'
- Dock Doors: 15 (up to 34 available)
- Overhead Doors: 1 (additional available)
- Lease Rate: Contact Broker



[View Interactive Tour](#)

For More Information

**Grant Glasgow, SIOR**

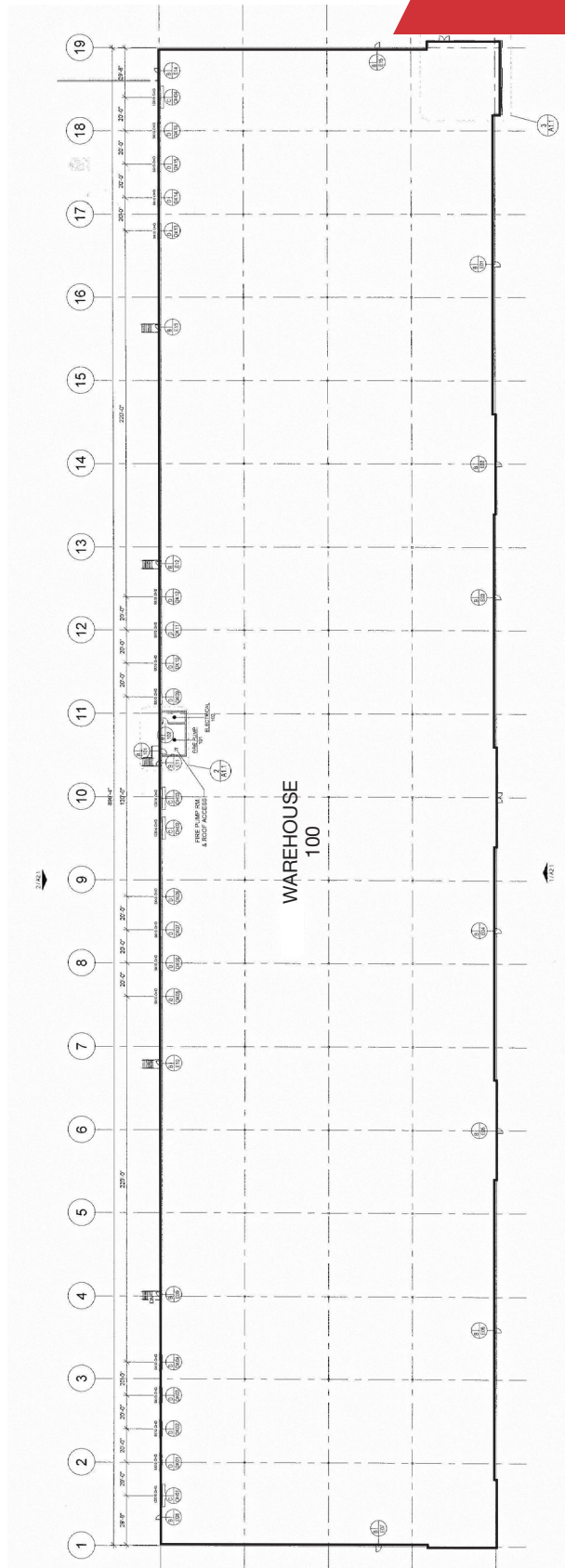
O: 316 847 4908

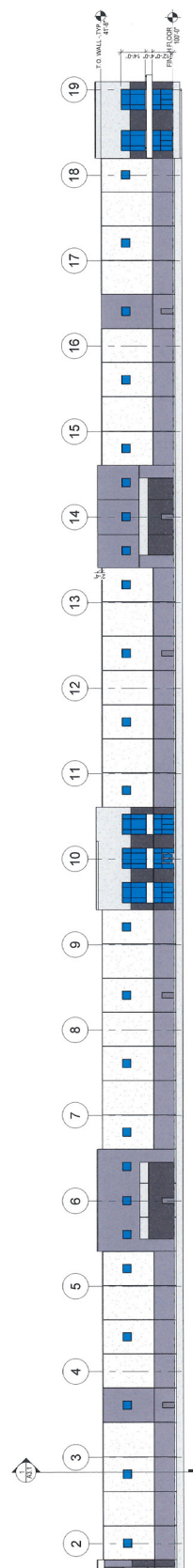
gglasgow@naimartens.com







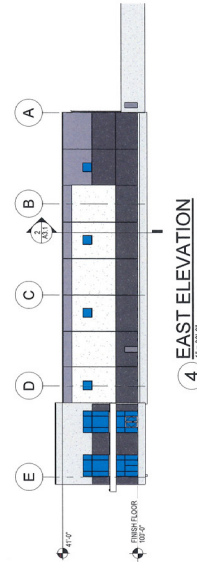




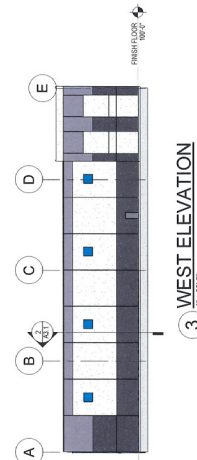
1 SOUTH ELEVATION  
1" = 32'-0"



2 NORTH ELEVATION  
1" = 32'-0"



4 EAST ELEVATION  
1" = 32'-0"



3 WEST ELEVATION  
1" = 32'-0"











# National Shipping Routes

Midwest Location



## NATIONALLY CONNECTED

Centrally located in the Midwest, the site is ideally positioned to provide efficient shipping and logistics both regionally and nationally. Superior Interstate highway and rail access make this a premier industrial property for manufacturing, warehouse and distribution on a national level. Located less than 15 minutes from Wichita's Dwight D. Eisenhower National Airport.

# Wichita, Kansas

## A Region with Top Talent & Opportunity for Growth

Nicknamed the Air Capital of the World, the City of Wichita is the economic hub of southcentral Kansas and northern Oklahoma, and the economy is anchored by a large manufacturing sector, including four aircraft assembly plants. In addition to aircraft manufacturers, the local economy is also supported by healthcare and education. These sectors account for nearly 45 percent of jobs in the area.



# #1

U.S. Manufacturing Metro

# #3

Engineering Hub in the U.S.

# 450+

Supplier Network



Founded in 1985, the National Institute for Aviation Research (NIAR) at Wichita State University is the largest aerospace research and development academic institution in the nation.



The National Center for Aviation Training (NCAT) is a world-class training facility that provides students the opportunity to receive hands-on, real-world training in general aviation manufacturing and aircraft and power plant mechanics.

## Home to Major Companies

