

For Lease

# Office Building

8,851 SF



## 2120 S. Airport Rd.

Wichita, Kansas 67209

### Property Highlights

- 8,851 SF Two-Story Brick Office Building
- Year Built: 1968
- Zoning: Limited Industrial
- Property Tax Exempt
- Area Users Include: FedEx, Bombardier Learjet, Textron Aviation, FlightSafety International, Garmin, Honeywell, and Pratt & Whitney

### Property Description

8,851 SF free-standing office building located on Dwight D. Eisenhower National Airport campus. This office space offers exceptional access to US-400, the main east and west arterial in Wichita. Hotels and business services as well as national restaurants are conveniently located within close proximity. Award winning Eisenhower National Airport serves 7 airlines with 13 non-stop destinations as well as developed a new \$200 Million terminal & 1,600 car parking garage in 2015.

#### OFFERING SUMMARY

Available SF	
Lease Rate	Contact Broker
Stories	2
Zoning	Limited Industrial

For more information

**Scott Salome, SIOR**

O: 316 847 4903  
ssalome@naimartens.com

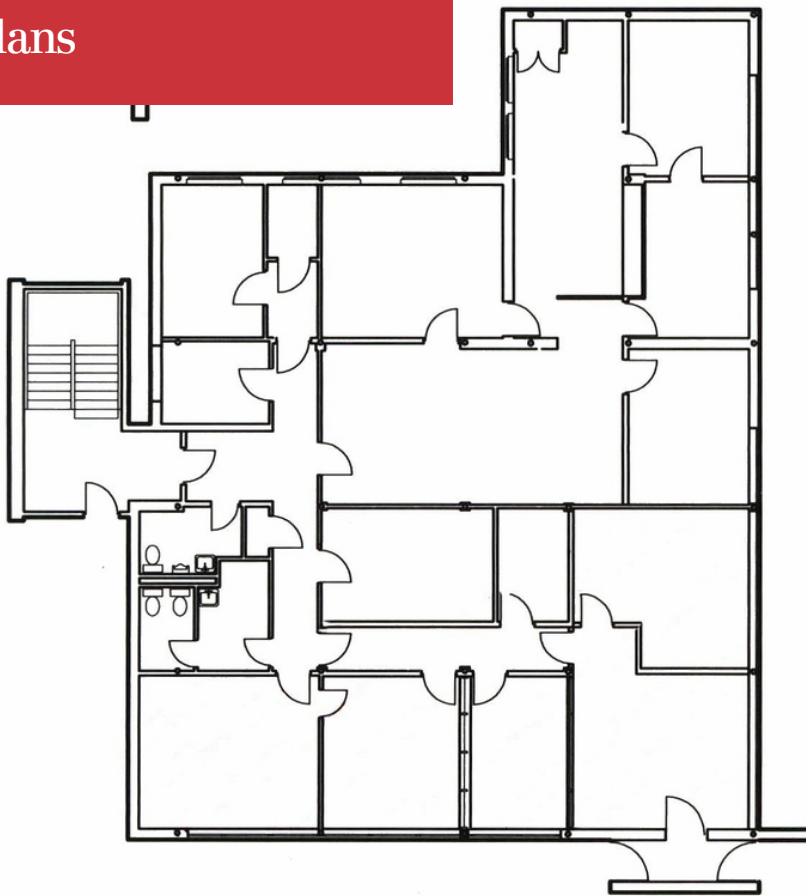
**Patrick Ahern, SIOR, CCIM**

O: 316 847 4914  
pahern@naimartens.com

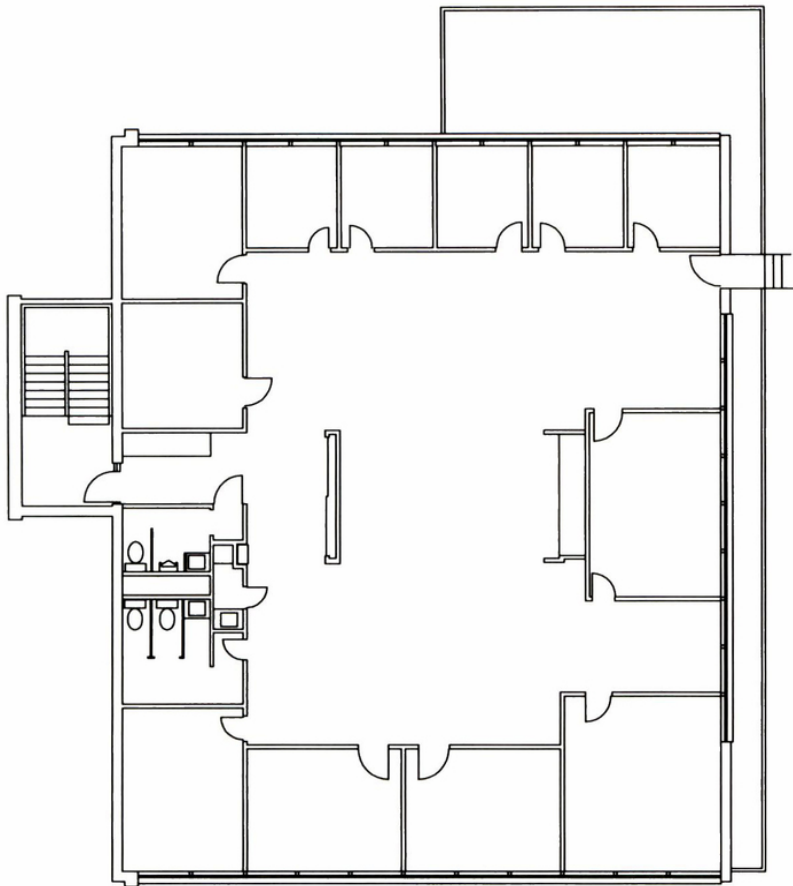


1330 E. Douglas Ave.,  
Wichita, KS 67214  
316 262 0000 tel  
[naimartens.com](http://naimartens.com)





**1st FLOOR**  
**4,159 SF**



**2nd FLOOR**  
**4,692 SF**



For Lease

# Office Building

8,851 SF



Map data ©2021 Google Imagery ©2021 , Landsat / Copernicus, Maxar Technologies, U.S. Geological Survey, USDA Farm Service Agency