

# Premier Industrial Sites

E 21st St N & I-135 | Wichita, KS



- South Central Kansas's Premier Industrial Development Site
- 120-acre master-planned development
- Lots available for purchase or build-to-suit
- Located in north-central Wichita at I-135 and 21st Street
- Full signalized interchange at I-135 and 21st Street
- Potential for rail spur from both Union Pacific and BNSF
- Call for pricing

[View Interactive Tour](#)

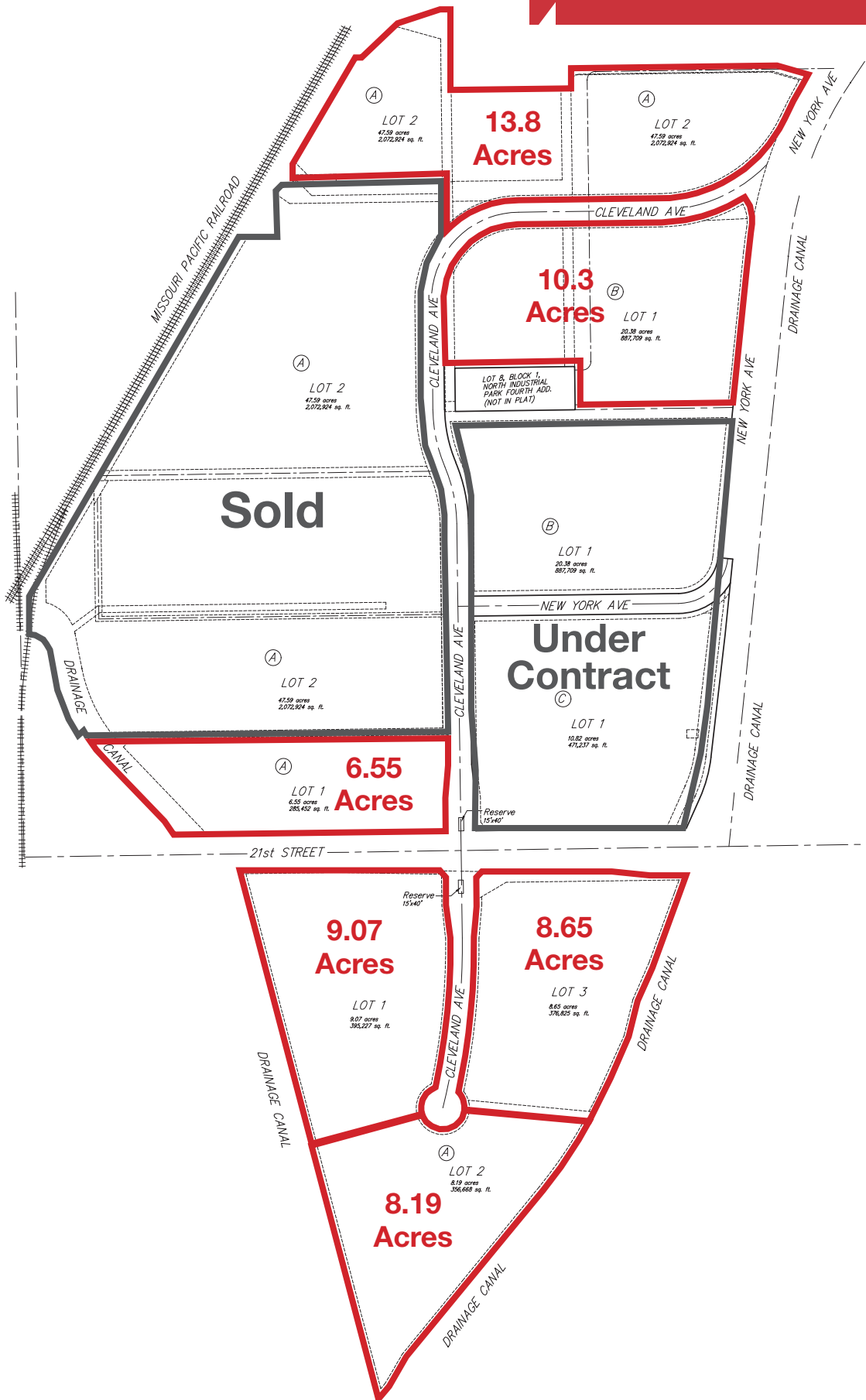




# Concept Site Plan

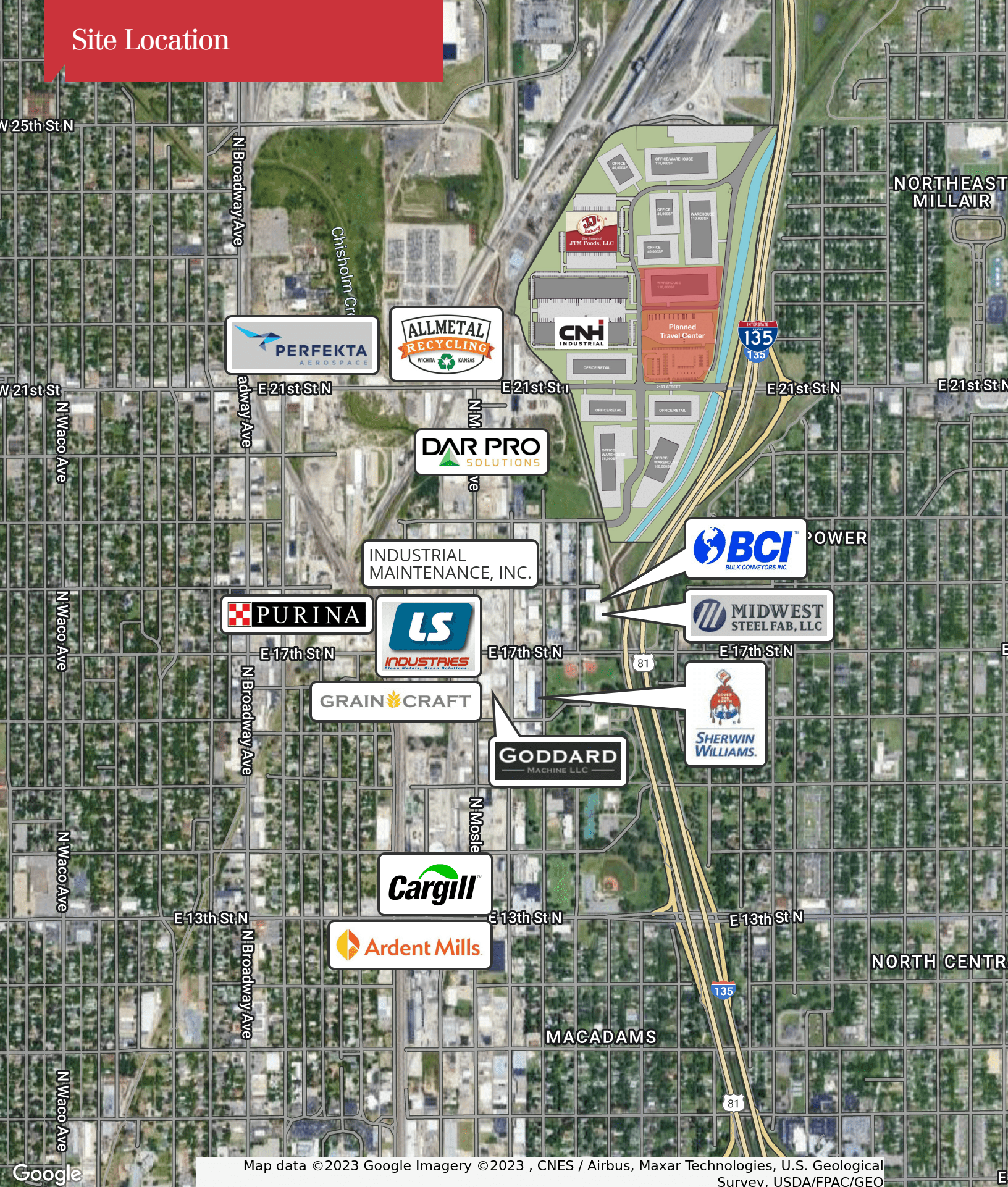


# Preliminary Plat





# Site Location



Map data ©2023 Google Imagery ©2023 , CNES / Airbus, Maxar Technologies, U.S. Geological Survey, USDA/FPAC/GEO



120-Acre Property





Access To Both Union Pacific &  
BNSF Railroads





## Additional Photos





# NW Corner of I-135 & 21st St North

A detailed map of Wichita, Kansas, and its surrounding areas. The map shows a network of major highways including Interstate 135, Interstate 235, Interstate 35, and US Routes 96, 254, 400, 15, and 42. Key neighborhoods and cities labeled include Valley Center, Park City, Kechi, Maize, Bel Aire, Chisholm Creek, Benjamin Hills, Orchard Park, Orchard Breeze, Delano, Eastborough, South Central, Southwest Village, Southwest Wichita, Oatville, Oaklawn-Sunview, Haysville, and Maize. The Arkansas River is shown flowing through the western part of the city. A red star marks a central location in Wichita. The Wichita Dwight D. Eisenhower National Airport is indicated with a blue airplane icon. The map is credited to Google and shows data from 2024.



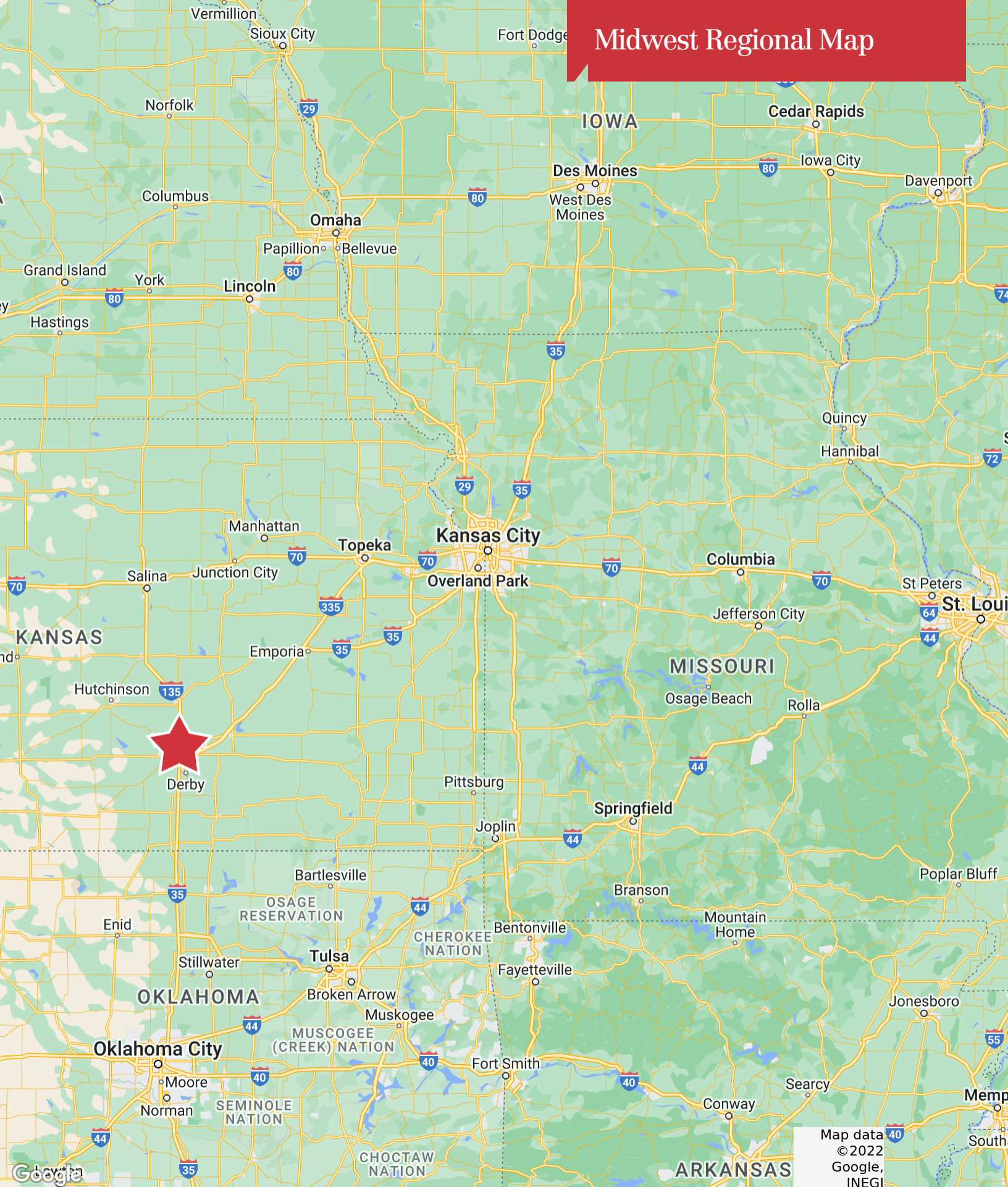






# Midwest Regional Map





# National Shipping Routes

Midwest Location



## NATIONALLY CONNECTED

Centrally located in the Midwest, the site is ideally positioned to provide efficient shipping and logistics both regionally and nationally. Superior Interstate highway and rail access make this a premier industrial property for manufacturing, warehouse and distribution on a national level. Located less than 15 minutes from Wichita's Dwight D. Eisenhower National Airport.



# Wichita, Kansas

## A Region with Top Talent & Opportunity for Growth

Nicknamed the Air Capital of the World, the City of Wichita is the economic hub of southcentral Kansas and northern Oklahoma, and the economy is anchored by a large manufacturing sector, including four aircraft assembly plants. In addition to aircraft manufacturers, the local economy is also supported by healthcare and education. These sectors account for nearly 45 percent of jobs in the area.



# #1

U.S. Manufacturing Metro

# #3

Engineering Hub in the U.S.

# 450+

Supplier Network



Founded in 1985, the National Institute for Aviation Research (NIAR) at Wichita State University is the largest aerospace research and development academic institution in the nation.



The National Center for Aviation Training (NCAT) is a world-class training facility that provides students the opportunity to receive hands-on, real-world training in general aviation manufacturing and aircraft and power plant mechanics.

## Home to Major Companies







**NaimMartens**

Grant Glasgow, SIOR

O: 316 847 4908

[gglasgow@naimartens.com](mailto:gglasgow@naimartens.com)