

For Sublease

Class A Office

Old Town District



Signal Theory Building

Wichita, Kansas 67202

Property Highlights

- Move-in ready space prominently located in Old Town
- Open floor plan featuring a captivating lobby, exposed ceilings, data cabling, updated modern finishes, outdoor balcony, and numerous windows
- Access to door-side surface parking and 2 parking garages with over 740 parking spaces
- Within walking distance of Old Town's best restaurants and shops

Property Description

Recently renovated move-in ready space offering the rare opportunity to be located in the desirable Old Town District, a sought out destination for its restaurants, shopping, and entertainment. Join more than 100 different businesses that already call the Old Town District home.

OFFERING SUMMARY

Available SF	
Lease Rate	Negotiable
Building Size	24,266 SF

DEMOGRAPHICS

Stats	Population	Avg. HH Income
1 Mile	8,324	\$32,212
3 Miles	105,490	\$39,998
5 Miles	244,706	\$44,190

For more information

Patrick Ahern, SIOR, CCIM

O: 316 847 4914
pahern@naimartens.com

Ryan Hubbard

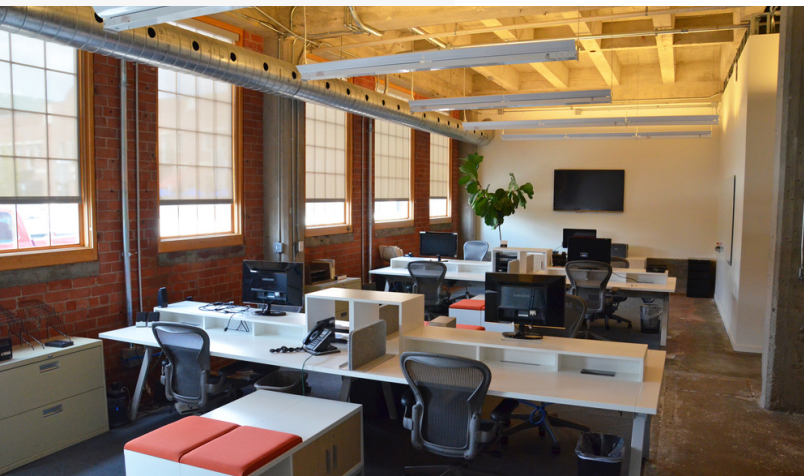
O: 316 613 2448
rhubbard@naimartens.com



1330 E. Douglas Ave.,
Wichita, KS 67214
316 262 0000 tel
naimartens.com



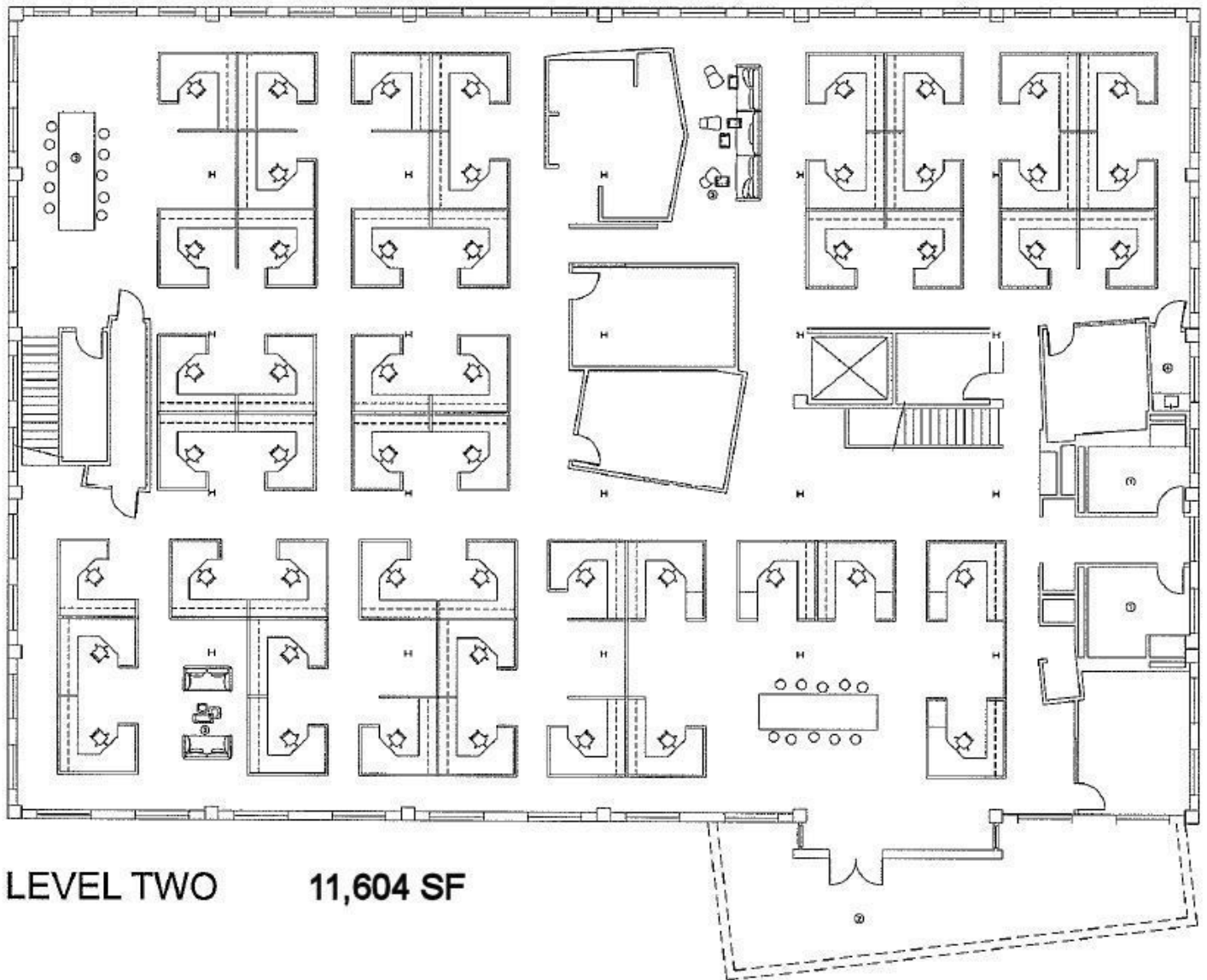
Additional Photos



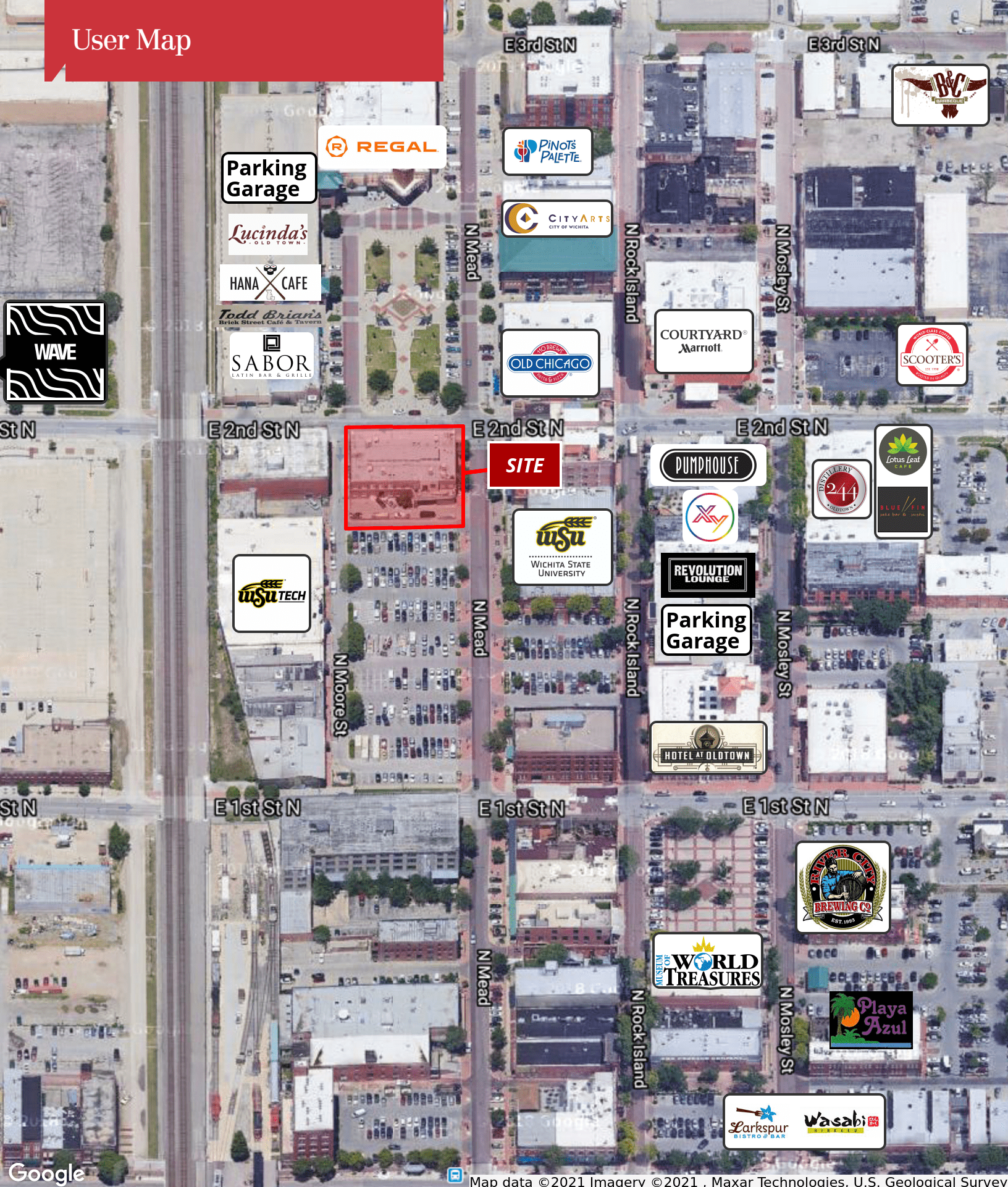
For Sublease

Class A Office

255 N Mead, Wichita, KS



User Map



Map data ©2021 Imagery ©2021 , Maxar Technologies, U.S. Geological Survey