

FOR SALE

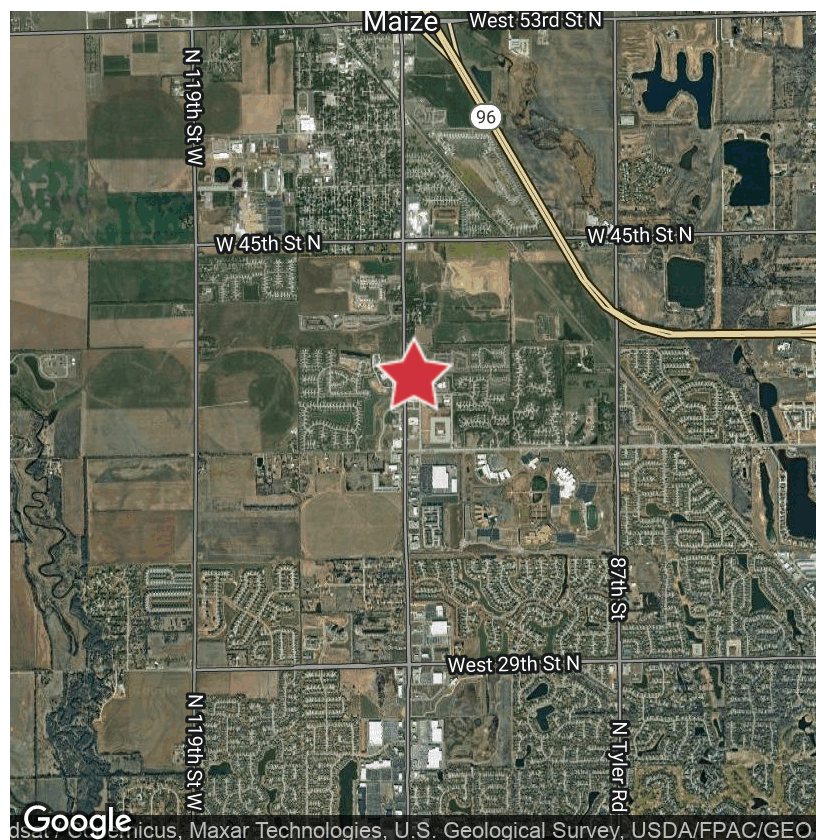
37th & Maize Wichita, KS 67205

NaimMartens



Maize Commercial Land | \$11/SF

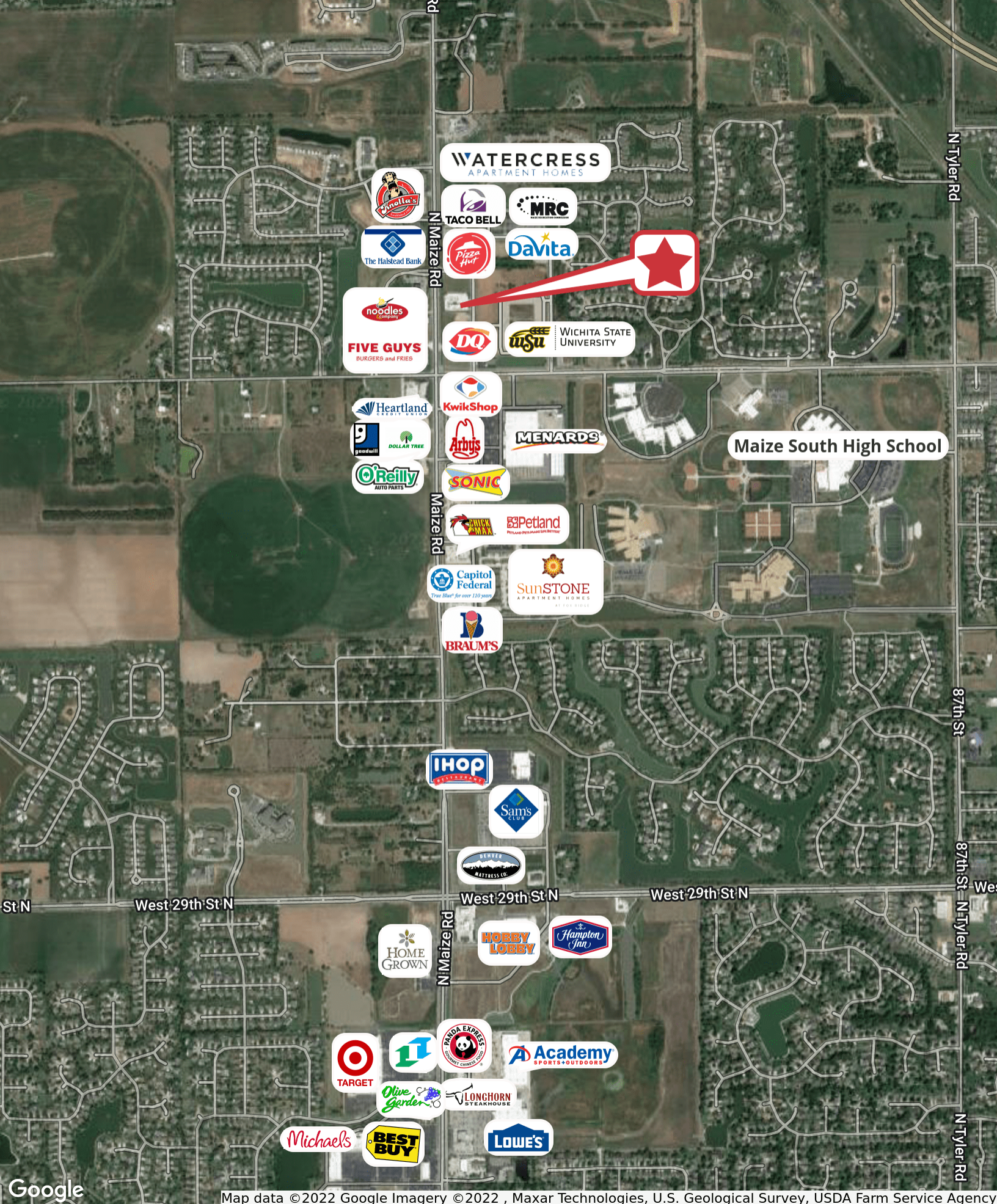
- Prime development land suitable for retail, restaurant, office, banking, or build-to-suit.
- 230' of frontage along Maize Road
- One curb cut allowed on Maize Road, and one curb cut allowed in the back off Reed Avenue.
- Lot Size: 1.42 acres
- Sale Price: \$680,000 (\$11/SF)
- Zoning: B-1 (General Business)
- 2021 Taxes: \$7,151.43
- High growth area with over 500 homes planned to be built north of 37th on Maize Road in the next 5 years.
- Located by many retailers including: NewMarket Square, Dairy Queen, Barn'rds, Kwik Shop, Sam's Club, HomeGrown, Academy Sports + Outdoors, Lowe's, Target, Braums, Best Buy, Pizza Hut, and Taco Bell.



✉ **Drew Gannon, CCIM**
+1 316 680 1108
dgannon@naimartens.com

No Warranty Or Representation, Express Or Implied, Is Made As To The Accuracy Of The Information Contained Herein, And The Same Is Submitted Subject To Errors, Omissions, Change Of Price, Rental Or Other Conditions, Prior Sale, Lease Or Financing, Or Withdrawal Without Notice, And Of Any Special Listing Conditions Imposed By Our Principals. No Warranties Or Representations Are Made As To The Condition Of The Property Or Any Hazards Contained Therein Are Any To Be Implied.

NaimMartens



Map data ©2022 Google Imagery ©2022 , Maxar Technologies, U.S. Geological Survey, USDA Farm Service Agency