

For Sale

Land

87.74 Acres

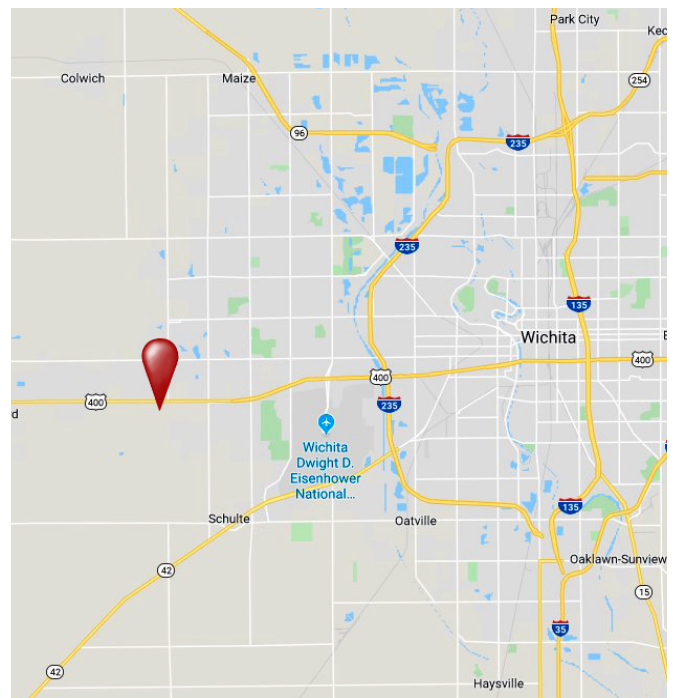


West Kellogg Land

SW/c Kellogg & 135th St | Wichita, Kansas 67235

Property Highlights

- 87.74 Acres Available
- Immediate Access to Kellogg/US-54
- Located Just South of Auburn Hills Golf Course
- Zoning: Limited Industrial / General Commercial
- 2018 Taxes: \$1,007.30
- Long Term Land Lease Revenue in Place - Contact Broker for Lease Details
 - Concrete Materials Company - 10 Acres
 - Verizon Cell Phone Tower
 - Two Lamar Billboards
- Gross Income: \$47,800
- Sale Price: \$1,825,000



Grant Glasgow, SIOR
Senior Vice President | 316.847.4908
gglasgow@naimartens.com



www.naimartens.com

INDEPENDENTLY OWNED AND OPERATED. THE INFORMATION CONTAINED HEREIN WAS OBTAINED FROM SOURCES BELIEVED RELIABLE; HOWEVER, NAI MARTENS COMPANY MAKES NO GUARANTEES, WARRANTIES OR REPRESENTATIONS AS TO THE COMPLETENESS OR ACCURACY THEREOF. THE PRESENTATION OF THIS PROPERTY IS SUBMITTED SUBJECT TO ERRORS, OMISSIONS, CHANGE OF PRICE OR CONDITIONS PRIOR TO SALE OR LEASE, OR WITHDRAWAL WITHOUT NOTICE.



FOR SALE



LAND



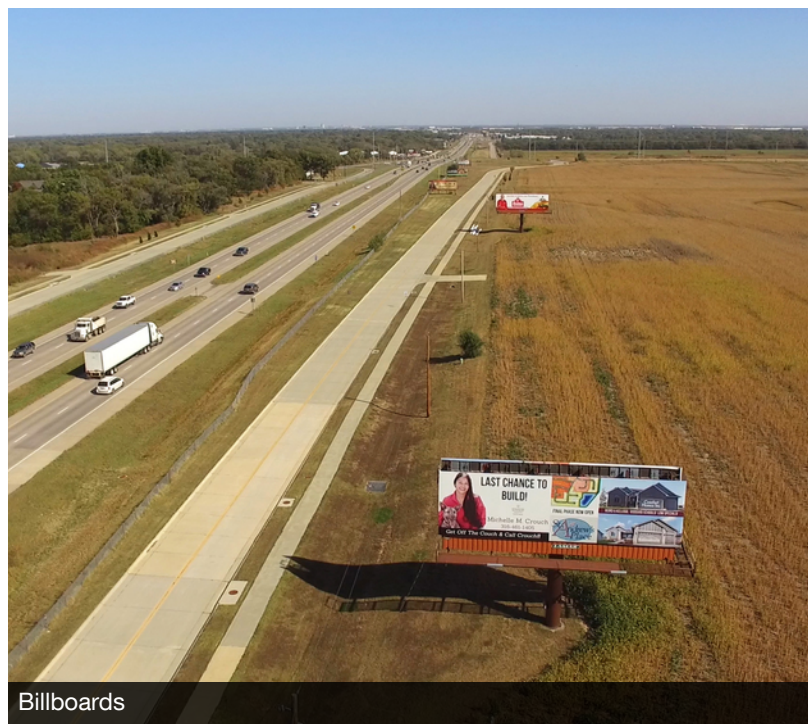
88 ACRES



Verizon Cell Tower



Concrete Batch Plant



Billboards



www.naimartens.com

Grant Glasgow, SIOR
Senior Vice President | 316.847.4908
gglasgow@naimartens.com

INDEPENDENTLY OWNED AND OPERATED. THE INFORMATION CONTAINED HEREIN WAS OBTAINED FROM SOURCES BELIEVED RELIABLE; HOWEVER, NAI MARTENS COMPANY MAKES NO GUARANTEES, WARRANTIES OR REPRESENTATIONS AS TO THE COMPLETENESS OR ACCURACY THEREOF. THE PRESENTATION OF THIS PROPERTY IS SUBMITTED SUBJECT TO ERRORS, OMISSIONS, CHANGE OF PRICE OR CONDITIONS PRIOR TO SALE OR LEASE, OR WITHDRAWAL WITHOUT NOTICE.