

For Sale

Aircraft Hangars Portfolio

96,536 SF



Eisenhower National Airport Hangars

1404 S. Airport Road
Wichita, Kansas 67209

Property Details

- 4 hangars available as an investment or owner/user
- Strong tenants
- All built to FAA specifications
- Varying sizes
- Office space in every hangar
- Located on land owned by the Wichita Airport Authority & under control of the TSA

Portfolio Breakdown

Hangar	Hangar SF	Office SF	Total SF
--------	-----------	-----------	----------



For more information

Grant Glasgow, SIOR

O: 316 847 4908
gglasgow@naimartens.com

Steven J. Martens, CCIM, SIOR

O: 316 847 4901
smartens@naimartens.com



1330 E. Douglas Ave.,
Wichita, KS 67214
316 262 0000 tel
naimartens.com



Hangars 1 & 2

Hangar 1



**Available for Owner-Occupant
or Pro-Forma Investment**

- Door Height: 22'
- Door Widths: 90' & 82'
- Door brand: Higher Power – single piece hydraulic door
- Radiant heat
- Fire protection – optical flame detectors
- Natural gas generator
- Power – 110v, 208v and 480v power available in interior and exterior hookups.
- Built to FAA specifications
- Center-trench floor drain
- Fully insulated walls and ceiling
- Ground power unit included with the property
- 10x10 overhead door
- Restroom & shower in hangar area
- Card access control
- Camera monitors
- Asking Price - \$3,136,191

Hangar 2



NNN Leased Hangar

- Door height: 28'
- Door width: 112'
- Door type: slider door with an additional single-panel opener
- Radiant heat
- Fire protection – optical flame detectors
- Natural gas generator
- Power – 110v, 208v and 480v power available in interior and exterior hookups.
- Built to FAA specifications
- Center-trench floor drain
- Fully insulated walls and ceiling
- Ground power unit included with the property
- Painted floors
- 10x10 overhead door
- Restroom & shower in hangar area
- Card access control
- Camera monitors
- Asking Price - \$3,039,851

Hangars 3 & 4

Hangar 3



**Available for Owner-Occupant
or Pro-Forma Investment**

- Door height: 28'
- Door width: 120'
- Door type: slider door with an additional single-panel opener
- Radiant heat
- Fire protection – wet sprinkler system
- Natural gas generator
- Power – 110v, 208v and 480v power available in interior and exterior hookups.
- Built to FAA specifications
- Center-trench floor drain
- Fully insulated walls and ceiling
- Ground power unit included with the property
- Painted floors
- 10x10 overhead door
- Restroom & shower in hangar area
- Card access control
- Camera monitors
- Asking Price - \$2,913,172

Hangar 4



NNN Leased Hangar

- Door height: 28'
- Door width: 140'
- Door type: slider door with an additional single-panel opener
- Radiant heat
- Fire protection – optical flame detectors
- Natural gas generator
- Power – 110v, 208v and 480v power available in interior and exterior hookups.
- Built to FAA specifications
- Center-trench floor drain
- Fully insulated walls and ceiling
- Painted floors
- 10x10 overhead door
- Restroom & shower in hangar area
- Card access control
- Camera monitors
- Asking Price - \$4,584,776

Photos



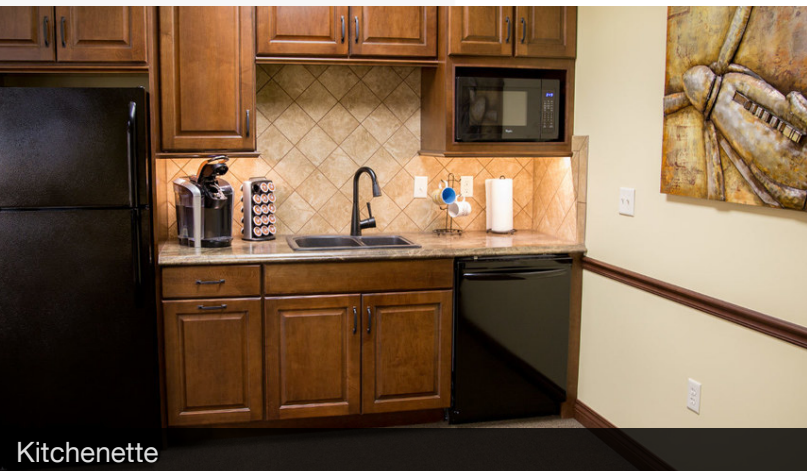
Hangar 2



Conference Room



Hangar 3 Single Panel Open



Kitchenette



Lounge

AIRPORT RD

For Sale

Aircraft Hangar Portfolio

96,536 SF



About Dwight D. Eisenhower National Airport

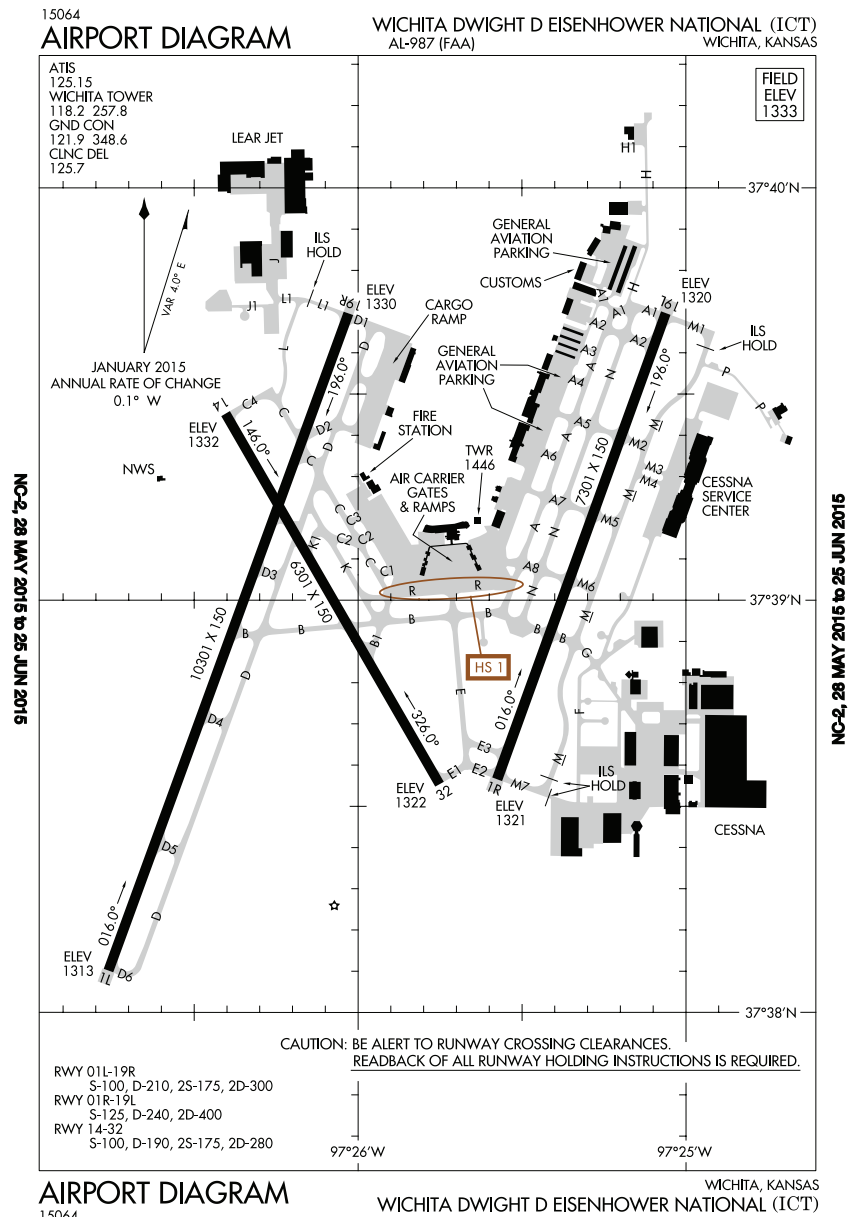
Wichita Dwight D. Eisenhower National Airport (KICT) is located approximately five miles from the downtown business district. The airport is included in the FAA's National Plan of Integrated Airport Systems (NPIAS), making it eligible to receive federal funds. Additionally, its role within the Kansas Aviation System Plan is identified as a Commercial airport which accommodates scheduled air carrier service as well as all general aviation aircraft.



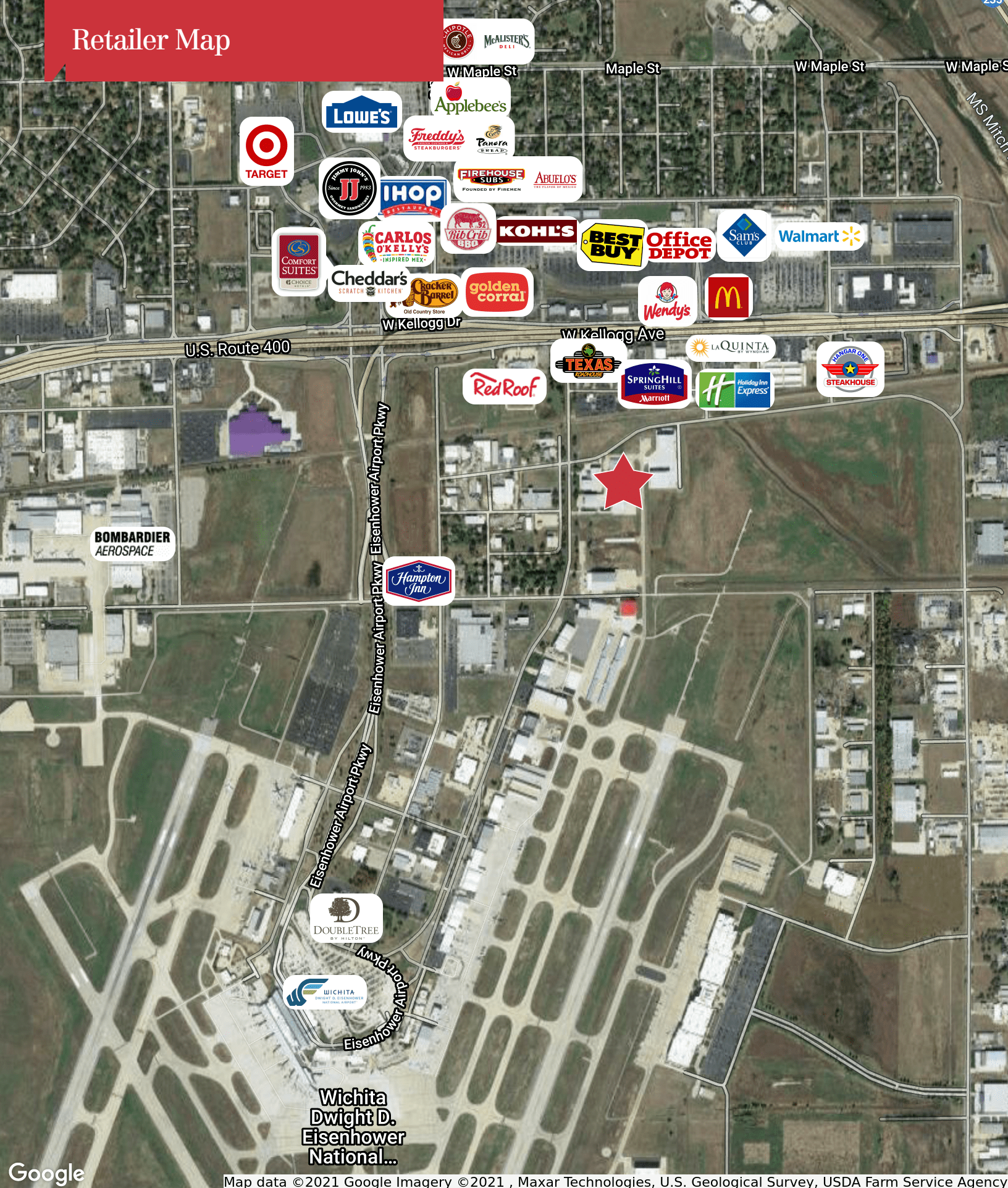
KICT has three runways, a pair of parallel runways and a crosswind runway. The primary runway, Runway 01L/19R, is 10,301 feet long, while its parallel is 7,301 feet long. The crosswind runway, Runway 14/32, is 6,301 feet long. Both parallel runways are equipped with ILS approaches to all runway ends. The airport enplanes more than 1.6 million passengers and accommodates approximately 118,000 annual operations. The airport is served by six commercial carriers who provide non-stop service to destinations throughout the US.

Wichita was one of the first cities to establish a commitment to the aviation industry during the 1920s, leading to the title "Air Capital of the United States." The continuing success of Wichita aircraft manufacturing companies such as Cessna, Lear, and Beech, earned the city the title "Air Capital of the World." Much of this activity takes place at KICT, with Cessna Aircraft Company and Bombardier Aerospace assembling business jets on the airport. This aircraft manufacturing base is supported by numerous FlightSafety International schools located on the airport that provide flight crew and maintenance training. Hilton operates a hotel on the airport, serving travelers to Wichita, as well as the thousands of students that attend FlightSafety International classes held at the airport each year.

Two fixed based operators (FBOs) provide services to general aviation users of the airport, Signature Flight Support and Yingling Aviation. Numerous major businesses use KICT. Both Cessna and Bombardier use the airport for flight testing of their new aircraft, as well as offering maintenance services to their customers. Koch Industries, one of the largest privately-owned businesses in the U.S. and headquartered in Wichita, makes regular use of the airport.



Retailer Map



Map data ©2021 Google Imagery ©2021 , Maxar Technologies, U.S. Geological Survey, USDA Farm Service Agency