

For Lease

FireWorx Office Space

2,500 - 5,000 SF Available



FireWorx Office Building

500 S. Topeka
Wichita, Kansas 67202

Property Highlights

- 14 Semi-Private fully-furnished Co-Working Spaces for up to 4 people
- 11 Private Spaces for Office or Creative Space ranging from 2,500 -5,000 sq. ft
- Private Parking lot for tenants, along with guest parking spaces
- Shared kitchen spaces
- Wi-Fi accessible to the Co-Working Spaces
- Shared Conference rooms and large outdoor patio
- Security entry via key fob into the building

Property Description

NAI Martens presents the opportunity to lease space in the new FireWorx building in Downtown Wichita. Situated on the Southeast corner of Topeka and Lewis inside the historic fire station, FireWorx consists of private office and co-working space ranging from 2,500 to 5,000 sq. ft of office space. FireWorx boasts high-ceilings, onsite coffee and sandwich shop, an outdoor patio and many other amenities.

[VIEW PROPERTY VIDEO](#)

OFFERING SUMMARY

Available SF	2,500 - 5,000 SF
Building Size	16,778 SF

OFFICE LAYOUTS

Space Type	Sq. Feet	Rate	Type
Dedicated Desk	N/A	\$250	Semi-Private
Team Suite (up to 4)	200+	\$750	Semi-Private
Team Offices (up to 4)	144+	\$1,000-1,200	Private
Mezzanine (up to 6)	900+	\$1,500	Private

For more information

Patrick Ahern, SIOR, CCIM

O: 316 847 4914

pahern@naimartens.com



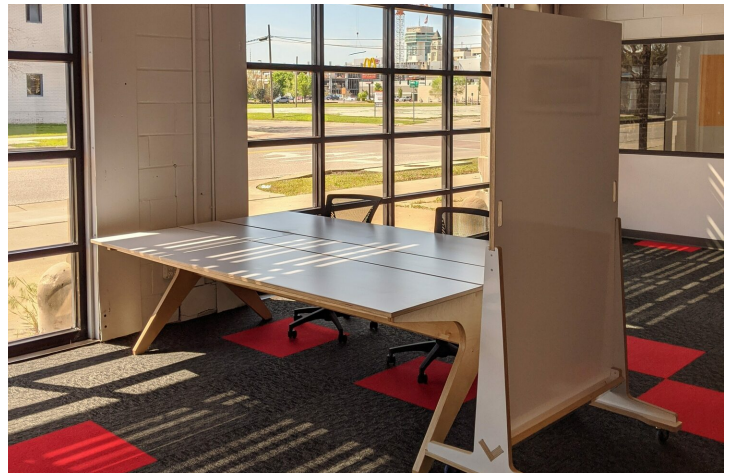
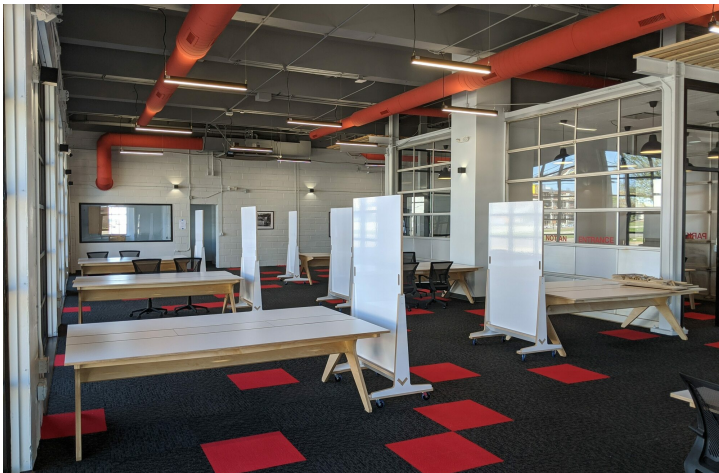
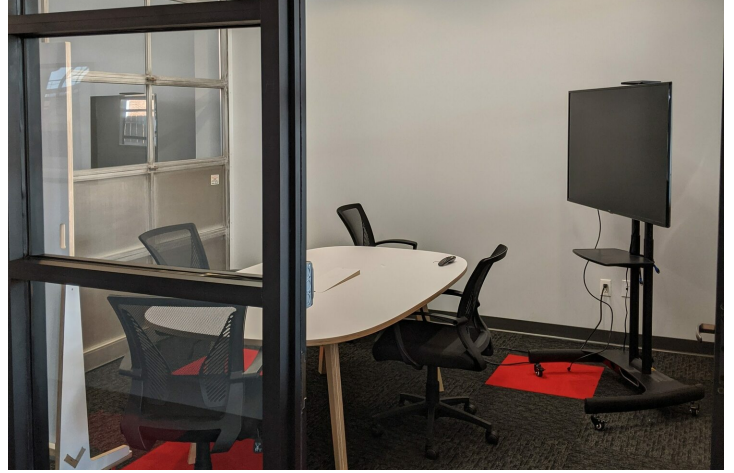
1330 E. Douglas Ave.,
Wichita, KS 67214
316 262 0000 tel
naimartens.com



For Lease

FireWorx Office Space

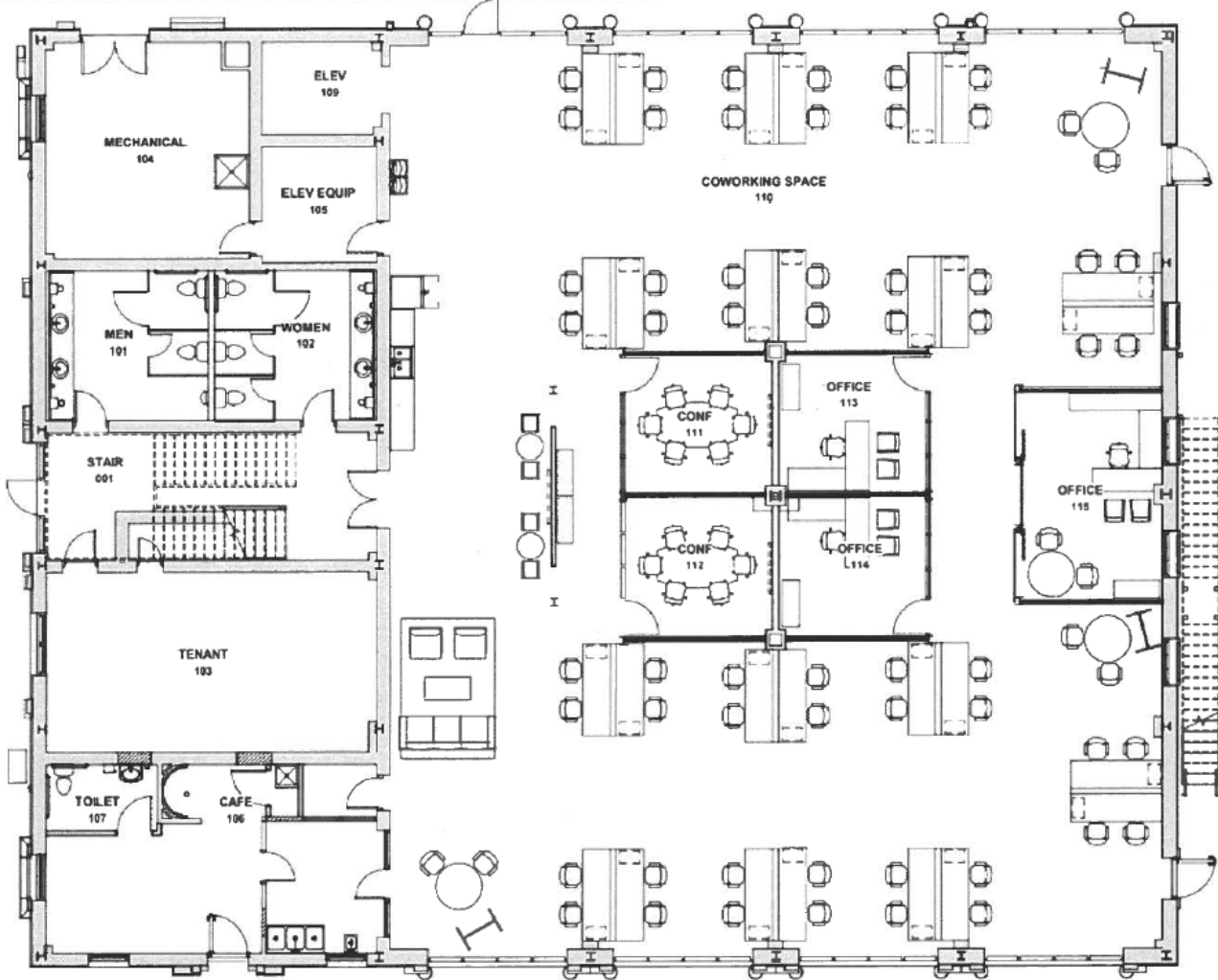
2,500 - 5,000 SF Available



For Lease

FireWorx Office Space

2,500 - 5,000 SF Available



DATE: 06/03/19
Furn
DWG NO.
REV.

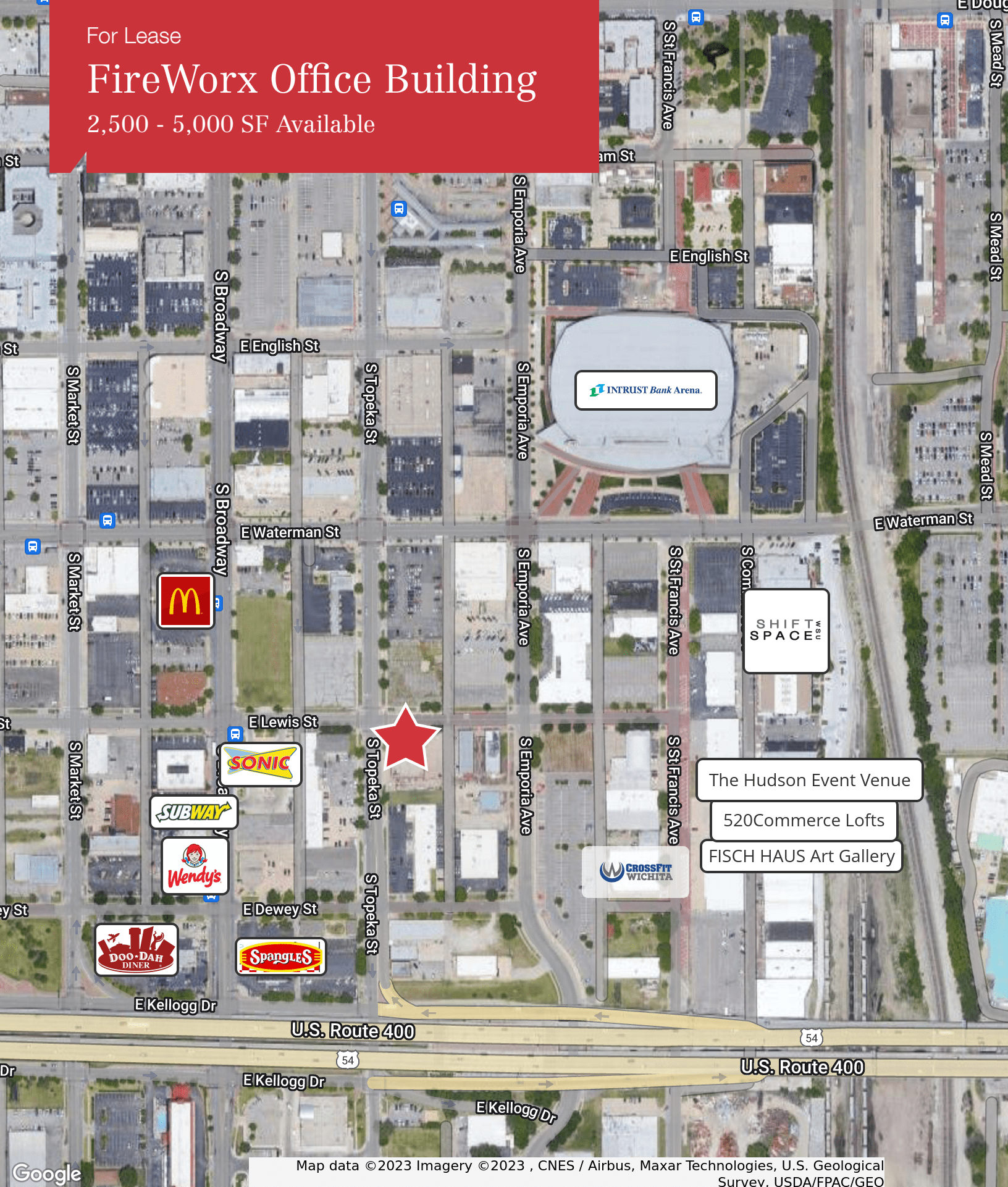
FIREWORX
PROJECT NO. 19-0001

SHIELDEN
ARCHITECTURE
SHIELDEN ARCHITECTURE, C
3001 E. 17th, Suite 100, Wichita, KS 67214-1001

For Lease

FireWorx Office Building

2,500 - 5,000 SF Available



Map data ©2023 Imagery ©2023 , CNES / Airbus, Maxar Technologies, U.S. Geological Survey, USDA/FPAC/GEO