

FOR SALE

55th Street S. & Oliver - Derby, KS 67037

NaimMartens



Derby Corporate Park

- 165.55 acres available in Derby Industrial/Business Park
- Located just south of Spirit Aerospace Campus
- Immediate Access to K-15
- 2 Miles to I-35 Interchange
- 3 Miles to I-135 Interchange
- Utilities Available to the Site
- Zoned B-5 (restricted commercial, warehousing and limited industrial uses)

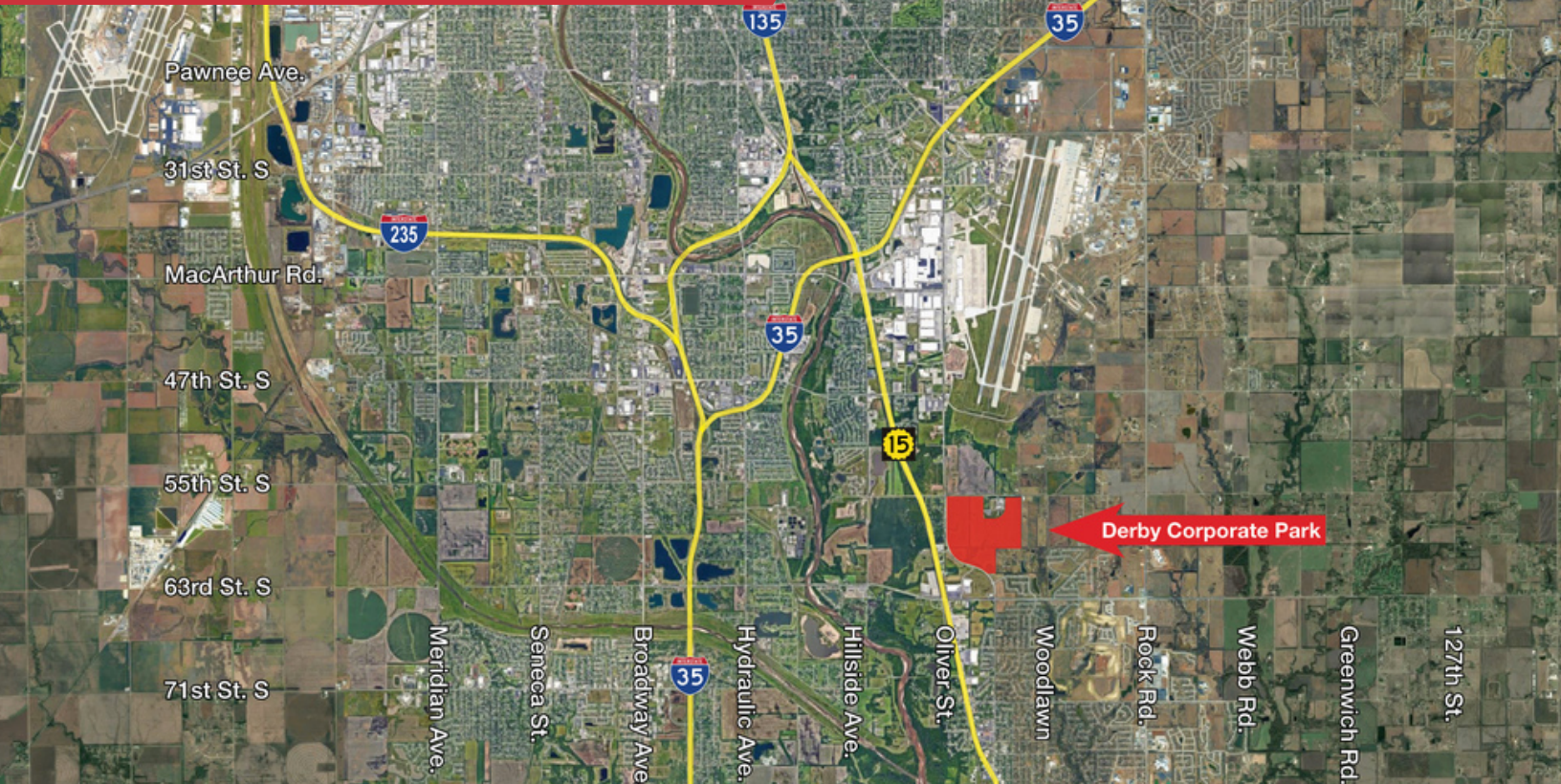
OFFERING SUMMARY

SALE PRICE	\$15,000 / acre
LOT SIZE	165.55 Acres

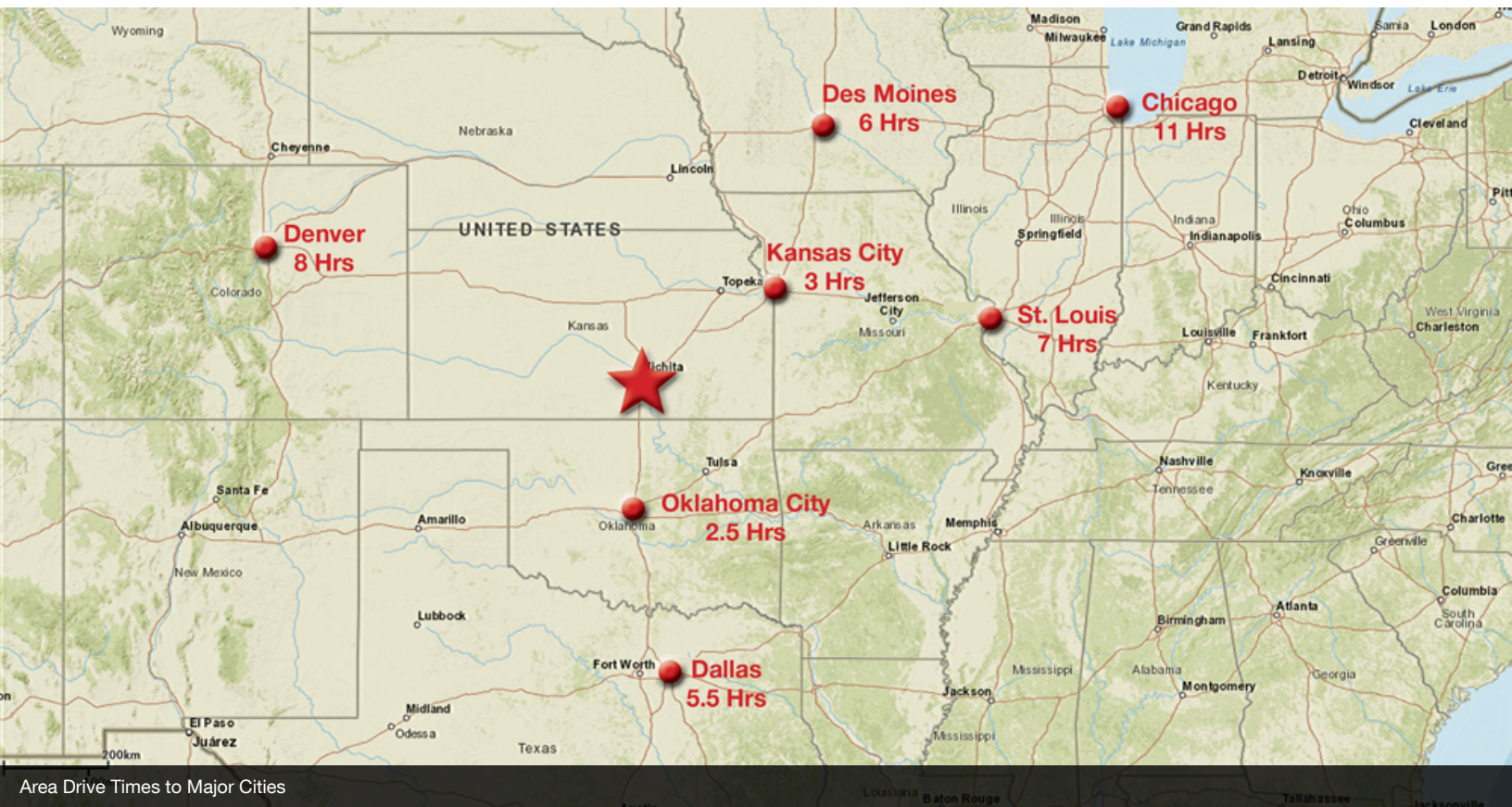
FOR SALE

55th S. & Oliver Derby, KS 67037

NaimMartens



Located along K-15 in Derby, KS



Area Drive Times to Major Cities

Grant Glasgow, SIOR
+1 316 847 4908
gglasgow@naimartens.com

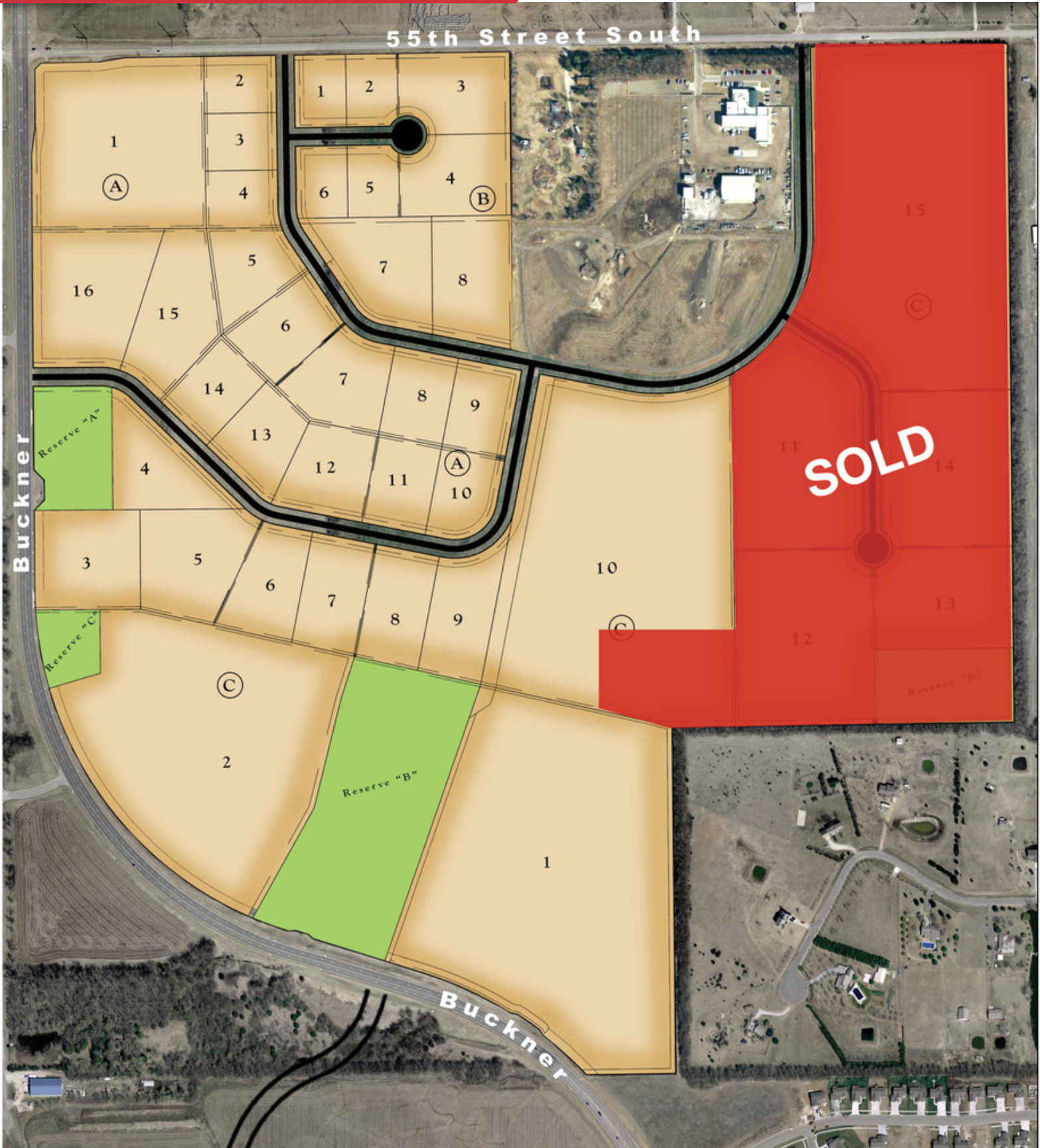
No Warranty Or Representation, Express Or Implied, Is Made As To The Accuracy Of The Information Contained Herein, And The Same Is Submitted Subject To Errors, Omissions, Change Of Price, Rental Or Other Conditions, Prior Sale, Lease Or Financing, Or Withdrawal Without Notice, And Of Any Special Listing Conditions Imposed By Our Principals No Warranties Or Representations Are Made As To The Condition Of The Property Or Any Hazards Contained Therein Are Any To Be Implied.

NaimMartens

FOR SALE

55th S. & Oliver Derby, KS 67037

NaimMartens



✉ Grant Glasgow, SIOR
+1 316 847 4908
gglasgow@naimartens.com

No Warranty Or Representation, Express Or Implied, Is Made As To The Accuracy Of The Information Contained Herein, And The Same Is Submitted Subject To Errors, Omissions, Change Of Price, Rental Or Other Conditions, Prior Sale, Lease Or Financing, Or Withdrawal Without Notice, And Of Any Special Listing Conditions Imposed By Our Principals. No Warranties Or Representations Are Made As To The Condition Of The Property Or Any Hazards Contained Therein Are Any To Be Implied.

NaimMartens