

For Lease

Office Space

Downtown Wichita, KS



230 S Laura

Wichita, Kansas 67211

Property Highlights

- Centrally located office space available for Lease
- Space available: 1,215 SF
- Door-side parking available
- Located in the popular Hyde Park area
- Within walking distance to many restaurants and stores
- Access to Kellogg/US 54 nearby via Washington Ave
- Lease rate: \$1,250/month, full service

Available Spaces

Spaces	Lease Rate	Size (SF)
Suite 101	\$1,250 per month	1,215



For more information

Ryan Hubbard

O: 316 613 2448

rhubbard@naimartens.com



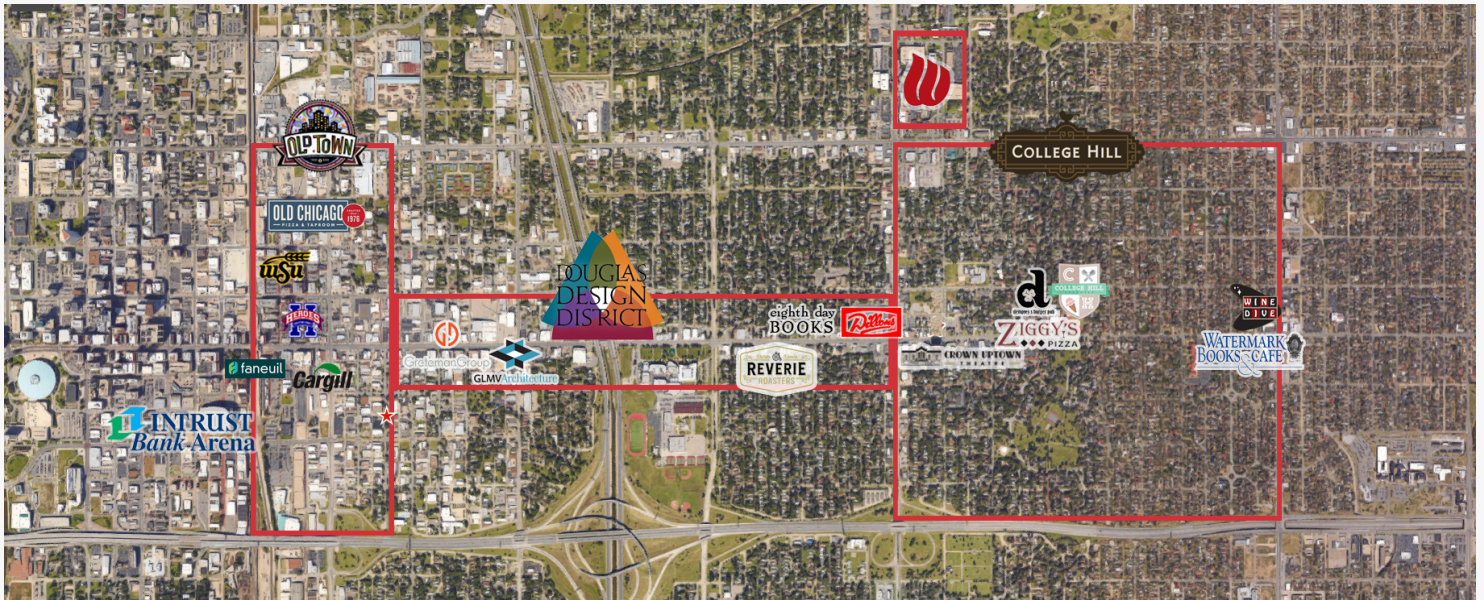
1330 E. Douglas Ave.,
Wichita, KS 67214
316 262 0000 tel
naimartens.com



For Lease

Office Space

Downtown Wichita, KS



OLD TOWN

Old Town is a thriving, brick-paved district which houses a variety of business offices, retail and restaurants in the heart of Wichita. The restaurants, from classics like the Beacon to chain restaurants like Old Chicago, receive traffic day and night from downtown businesses.

Non-retail business is expanding in Old Town as Cargill proceeds with the construction of their new Wichita headquarters on Douglas and the operations outsourcing company Faneuil announced plans to open a call center in the revamped Union Station next door. Wichita State University recently completed their downtown campus to house their entire Physical Therapy department in Old Town.

DOUGLAS DESIGN DISTRICT

The Douglas Design District is comprised of more than 300 locally owned businesses, a large number of which offer creative or artistic services. Restaurants include local favorites like The Donut Whole and Reverie Coffee Roasters.

The retail features a large number of antique and home design shops. Local favorites such as Eighth Day Books and The Spice Merchant add charm and character to the region.

A number of graphic design and advertising firms hold offices in this district as well, such as Greteman Group. Other notable businesses in the area include BCS and GLMV Architecture.

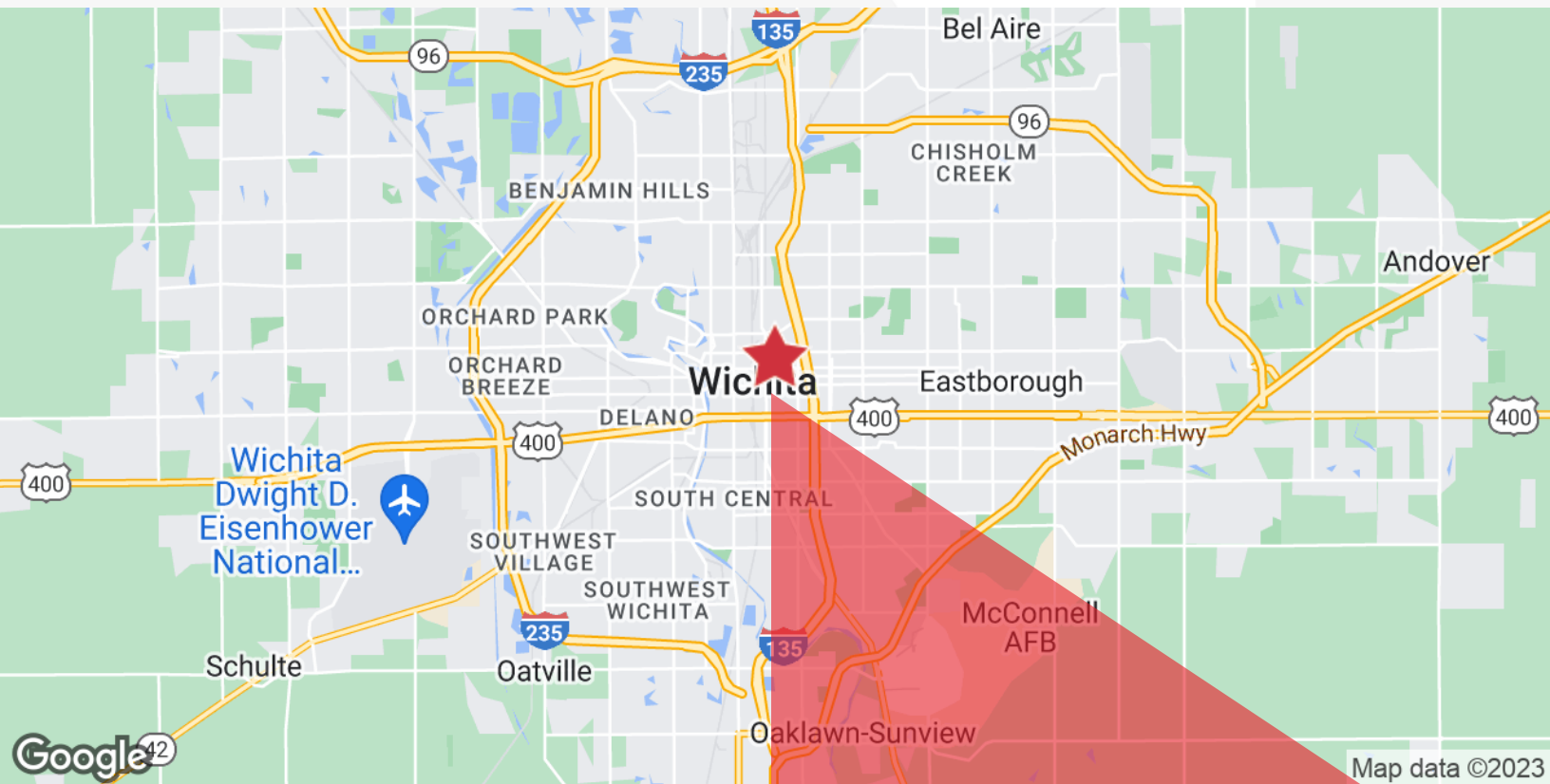
Overall, this eclectic district has numerous businesses to satisfy loyal customers and attract new ones.

Location Maps



230 S Laura

Wichita, Kansas 67211



For more information

Ryan Hubbard

O: 316 613 2448 | rhubbard@naimartens.com

NAIMartens

1330 E. Douglas Ave.,
Wichita, KS 67214
316 262 0000 tel
naimartens.com

